

VOR/DME HYK

112.6

Chan 73

APP CRS

161°

Rwy Idg

5001

TDZE

978

Apt Elev

1003

VOR RWY 18

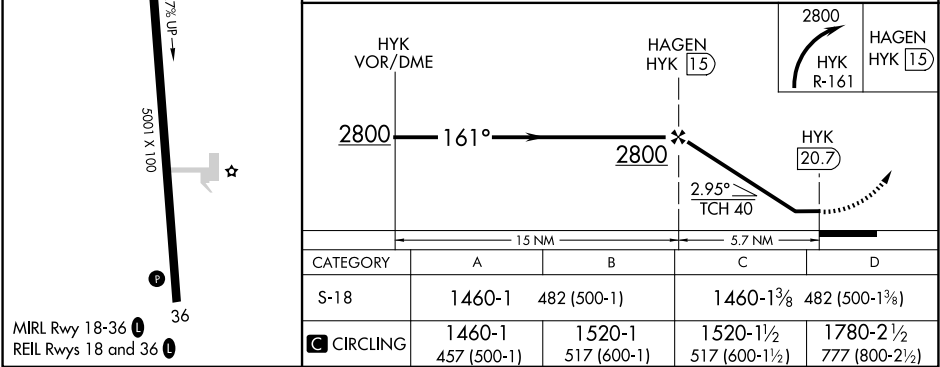
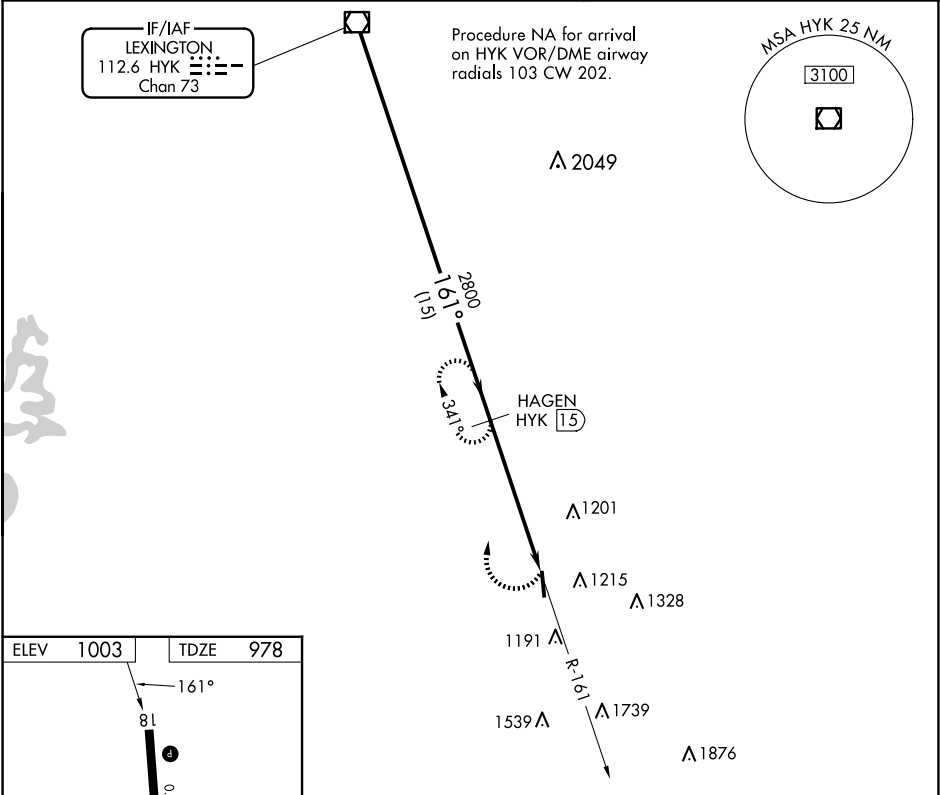
CENTRAL KENTUCKY RGNL (RGA)

DME required.

When local altimeter setting not received, use Lexington altimeter setting and increase all MDA 80 feet; increase S-18 Cats C and D visibility ¼ SM; Circling Cat C ½ SM and Circling Cat D ¼ SM.

MISSED APPROACH: Climbing right turn to 2800 on HYK VOR/DME R-161 to HAGEN/15 DME and hold.

AWOS-3 119.625	LEXINGTON APP CON 120.15 259.3	UNICOM 122.725 (CTAF) 0
-------------------	-----------------------------------	----------------------------



SE-1, 07 AUG 2025 to 04 SEP 2025

SE-1, 07 AUG 2025 to 04 SEP 2025