

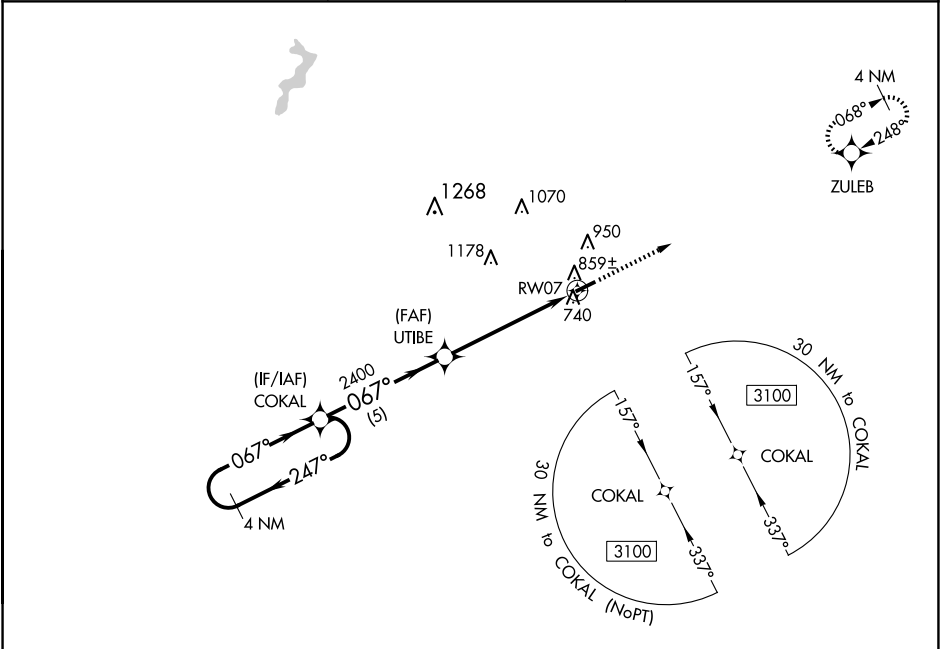
WAAS CH 50431 W07A	APP CRS 067°	Rwy Idg TDZE Apt Elev	4500 692 692
--	------------------------	-----------------------------	---

RNAV (GPS) RWY 7

RUSSELLVILLE-LOGAN COUNTY (4M7)

<div><div>NA</div><div>Baro-VNAV NA. DME/DME RNP-0.3 NA. Use Springfield altimeter setting. Circling Rwy 25 NA at night.</div></div>	MISSED APPROACH: Climb to 3100 direct ZULEB and hold.
--	---

M91 AWOS-3 120.675	MEMPHIS CENTER 133.85 285.5	UNICOM 122.7 (CTAF) 0
------------------------------	---------------------------------------	---------------------------------



ELEV 692		TDZE 692		
4 NM Holding Pattern		3100 ZULEB		
COKAL		UTIBE		
3100 ← 247° 067° →		2400		
GP 3.00° TCH 40		RW07		
5 NM		5.2 NM		
CATEGORY	A	B	C	D
LPV DA	982-1		290 (300-1)	
LNAV/ VNAV DA	1060-1¼		368 (400-1¼)	
LNAV MDA	1160-1	468 (500-1)	1160-1⅜	468 (500-1⅝)
C CIRCLING	1320-1	628 (700-1)	1320-1¾ 628 (700-1¾)	1520-2¾ 828 (900-2¾)

REIL Rwy 7 and 25 0

MIRL Rwy 7-25 0