

WAAS
CH **90431**
W25A

APP CRS
248°

Rwy Idg
TDZE **681**
Apt Elev **692**

RNAV (GPS) RWY 25

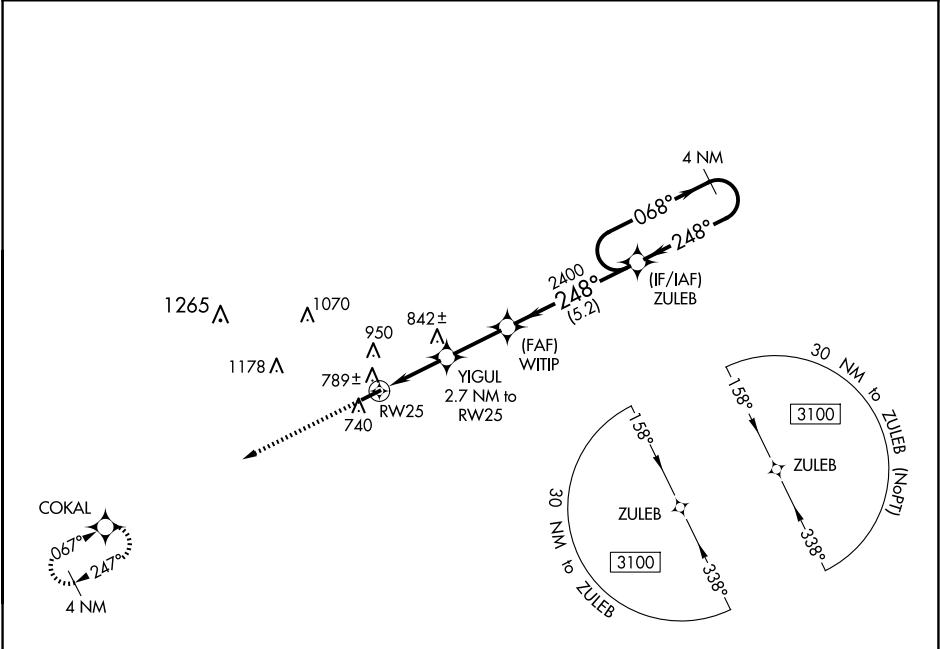
RUSSELLVILLE-LOGAN COUNTY (4M7)

NA

Baro-VNAV NA, DME/DME RNP-0.3 NA. Use Springfield altimeter setting. Rwy 25 helicopter visibility reduction below 1 SM NA. Straight-in Rwy 25 NA at night, Circling Rwy 25 NA at night.

MISSED APPROACH:
Climb to 3100 direct
COKAL and hold.

| | | |
|------------------------------|---------------------------------------|---------------------------------|
| M91 AWOS-3 120.675 | MEMPHIS CENTER 133.85 285.5 | UNICOM 122.7 (CTAF) 0 |
|------------------------------|---------------------------------------|---------------------------------|



ELEV 692

TDZE 681

3100

COKAL

VGSI and RNAV glidepath not coincident
(VGSI Angle 3.00/TCH 43).

4 NM Holding Pattern

*LNAV only

WITIP

2400

YIGUL 2.7 NM to RW25

1600*

2400

248°

068°

248°

3100

GP 3.10° TCH 56

2.7 NM

2.4 NM

5.2 NM

| CATEGORY | A | B | C | D |
|---------------------|---------|-------------|-------------------------|-------------------------|
| LPV DA | 985-1 | | 304 (300-1) | |
| LNAV/VNAV DA | 1001-1½ | | 320 (400-1½) | |
| LNAV MDA | 1080-1 | 399 (400-1) | 1080-1½ | 399 (400-1½) |
| <div>CIRCLING</div> | 1320-1 | 628 (700-1) | 1320-1¾ 628 (700-1¾) | 1520-2¾ 828 (900-2¾) |

REIL Rwys 7 and 25 0

MIRL Rwy 7-25 0