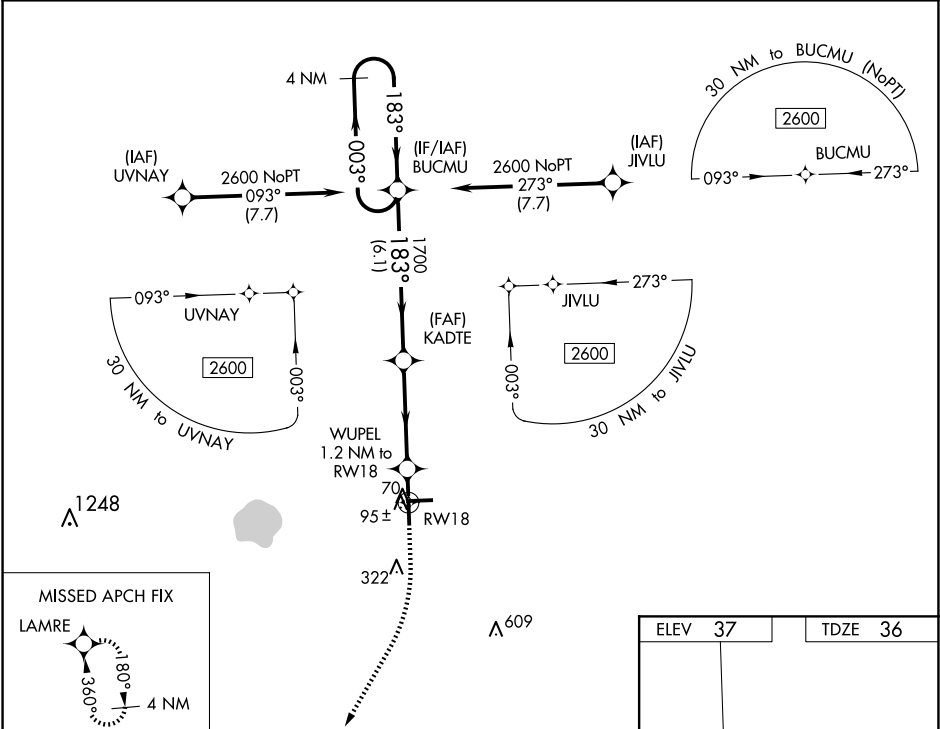


RNP APCH - GPS.		MISSED APPROACH: Climb to 500 then climbing right turn to 2000 direct LAMRE and hold.
For uncompensated Baro-VNAV systems, LNAV/VNAV NA below 0°C or above 54°C.		
AWOS-3 118.525	FORT MYERS APP CON ★ 124.125 371.85	CTAF 122.9 0



VGSF and RNAV glidepath not coincident (VGSF Angle 3.00°/TCH 52).		500	2000	LAMRE
BUCMU		1700	460	36
KADTE		1700	460	36
WUPEL 1.2 NM to RW18		1700	460	36
RW18		1700	460	36
GP 3.00° TCH 49		1700	460	36
6.1 NM		3.9 NM	1.2 NM	
CATEGORY	A	B	C	D
LPV DA	286-1	250 (300-1)		
LNAV/VNAV DA	286-1	250 (300-1)		
LNAV MDA	360-1	324 (400-1)		
CIRCLING	500-1 463 (500-1)	640-1 603 (700-1)	640-1 ¾ 603 (700-1 ¾)	680-2 643 (700-2)