

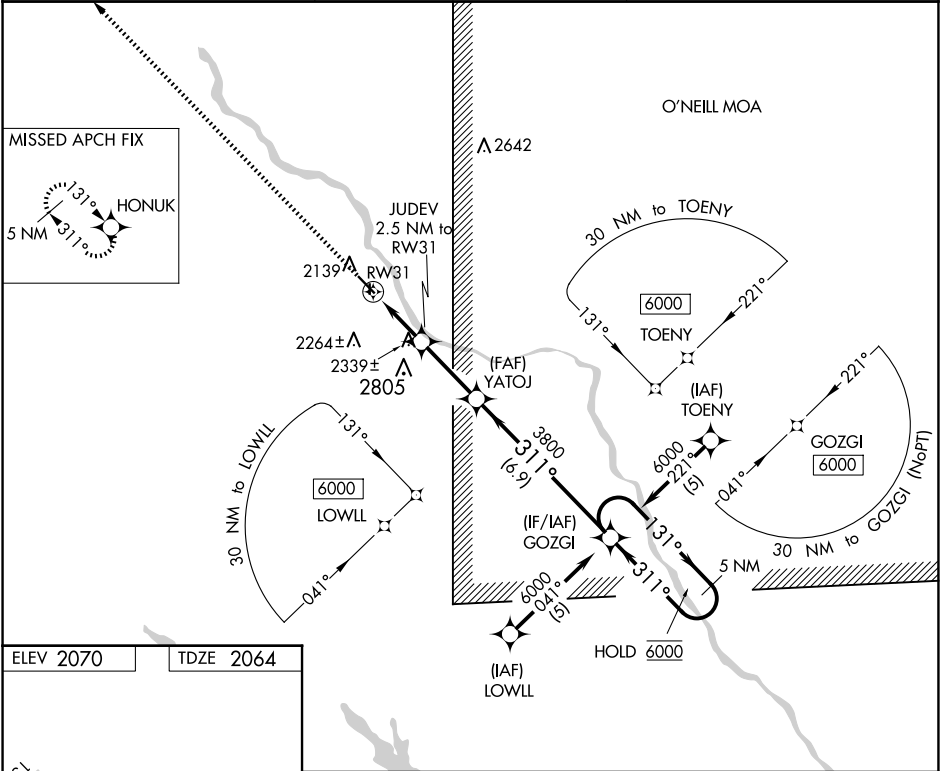
WAAS CH 99412 W31A	APP CRS 311°	Rwy Idg TDZE Apt Elev	4501 2064 2070
----------------------------------------	------------------------	-----------------------------	-------------------------------------------

RNAV (GPS) RWY 31

EVELYN SHARP FLD (ODX)

RNP APCH.	MISSED APPROACH: Climb to 6000 direct HONU and hold, continue climb-in-hold to 6000.
<div><div>▼</div><div>▲</div></div> <div>Circling NA to Rws 17 and 35. For uncompensated Baro-VNAV systems, LNAV/VNAV NA below -24°C or above 54°C.</div>	

ASOS 119.925	MINNEAPOLIS CENTER 119.4 278.8	UNICOM 122.8 (CTAF) 0
------------------------	------------------------------------------	---------------------------------



ELEV 2070	TDZE 2064	6000 HONU VGSI and RNAV glidepath not coincident (VGSI Angle 3.00/TCH 32).			
<div><div>6000</div><div>HONU</div><div>VGSI and RNAV glidepath not coincident (VGSI Angle 3.00/TCH 32).</div></div>		5 NM Holding Pattern			
		<div><div>GOZGI</div><div>131°</div><div>311°</div><div>6000</div></div>			
*INAV only		JUDEV 2.5 NM to RW31	YATOJ 3800	GP 3.00° TCH 40	
1.6 NM to RW31		2880			
1.6 NM		0.9 NM	2.8 NM	6.9 NM	
CATEGORY	A	B	C	D	
LPV DA	2314-1	250 (300-1)	NA		
LNAV/VNAV DA	2616-1½	552 (600-1½)	NA		
LNAV MDA	2600-1	536 (600-1)	NA		
CIRCLING	2680-1	610 (700-1)	NA		

NC-2, 07 AUG 2025 to 04 SEP 2025

NC-2, 07 AUG 2025 to 04 SEP 2025