

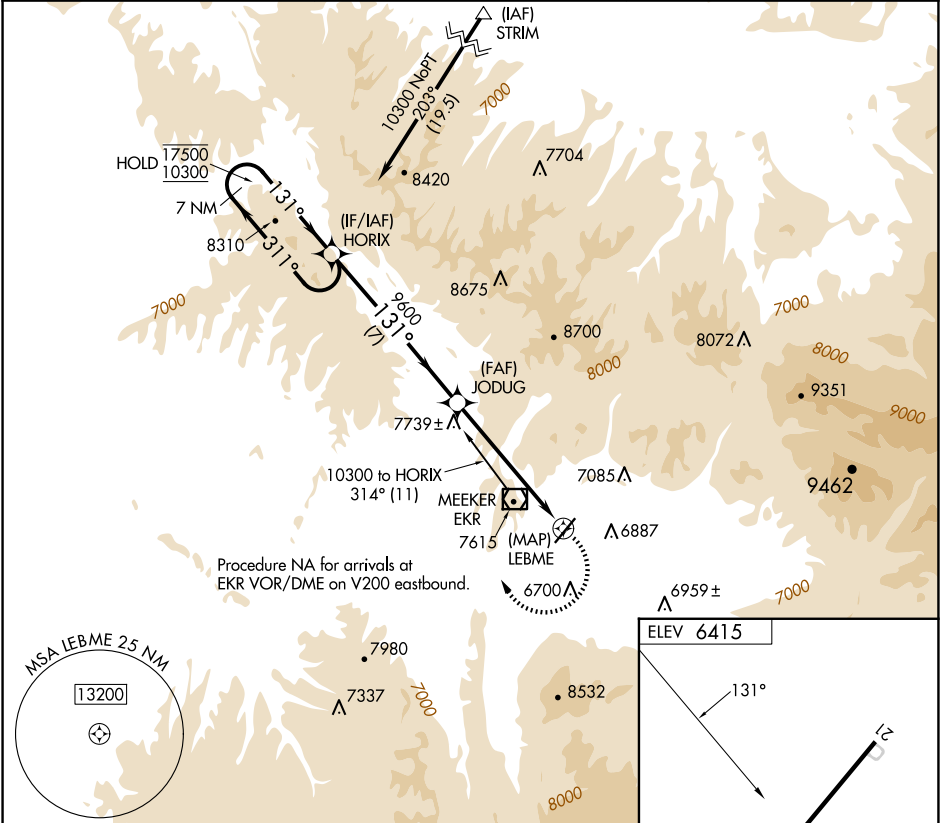
APP CRS	Rwy Ldg	N/A
131°	TDZE	N/A
	Apt Elev	6415



RNAV (GPS)-B


MEEKER COULTER FLD (E/O)

RNP APCH - GPS.	MISSED APPROACH: Climbing right turn to 10300 direct HORIX and hold.
<div><div>▼</div><div>⚠</div><div>❄</div></div> <div>Circling NA west of Rwy 3-21. Rwy 21 helicopter visibility reduction below 1 SM NA. Circling Rwy 21 NA at night.</div> <div>-22°C</div>	

ASOS 135.525	DENVER CENTER 134.5 327.8	UNICOM 122.8(CTAF) 
-----------------	------------------------------	---



<div>7 NM Holding Pattern</div> <div><div>17500</div><div>10300</div></div> <div><div>HORIX</div><div>JODUG</div><div>LEBME</div></div> <div><div>7 NM</div><div>5.9 NM</div></div>				
<div>10300 HORIX</div> <div></div>				
CATEGORY	A	B	C	D
CIRCLING	8260-1¼ 1845 (1900-1¼)	8260-1½ 1845 (1900-1½)	8620-3 2205 (2300-3)	NA

MIRL Rwy 3-21 

REIL Rwys 3 and 21 