

APP CRS  
**093°**

Rwy Ldg  
TDZE  
Apt Elev

**7000**  
**594**  
**607**

RNAV (GPS) RWY 9

BENJAMIN TAISACAN MANGLONA INTL (GRO)(PGRO)

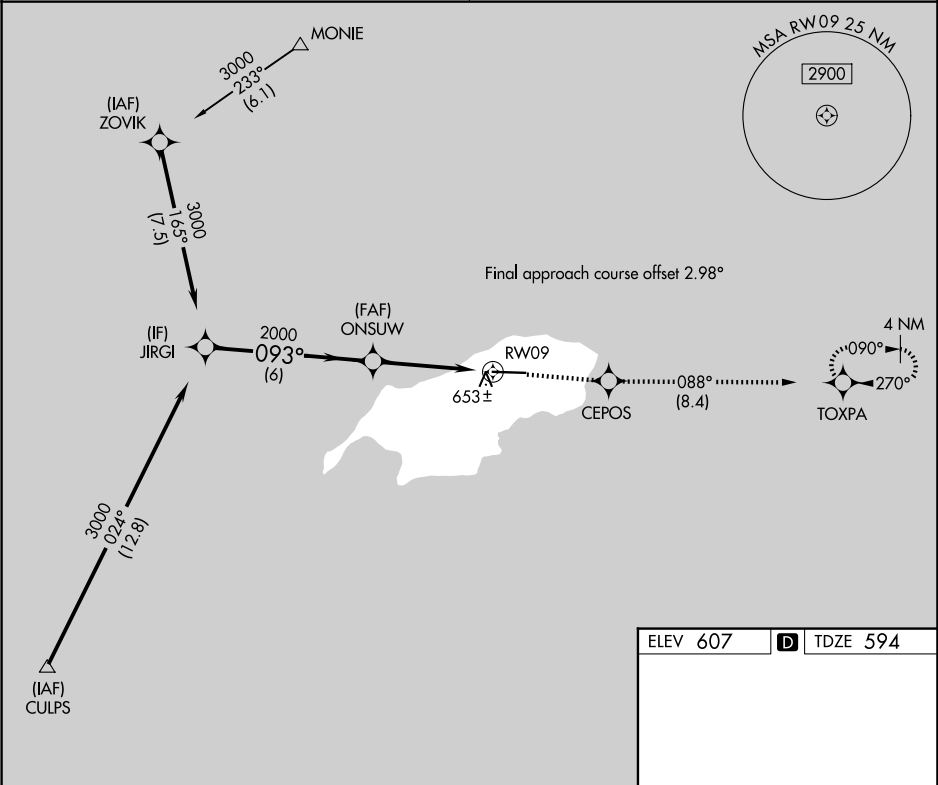
▼

⚠

Circling NA south of Rwy 9-27. DME/DME RNP-0.3 NA. When local altimeter setting not received, use Andersen AFB altimeter setting and increase all MDA 320 feet, increase LNAV Cat C, D visibility 7/8 mile, Circling Cat C, D visibility 3/4 mile. VDP NA when using Andersen AFB altimeter setting.

MISSED APPROACH: Climb to 3000 direct CEPOS and on track 088° to TOXPA and hold.

GUAM CERAP 120.5 263.0	CTAF 123.6
---------------------------	---------------



JIRGI

3000

ONSUW

2000

CEPOS

tr 088°

TOXPA

093°

0.3% UP

7000 X 150

27

	6 NM	3.1 NM	1.2	
CATEGORY	A	B	C	D
LNAV MDA	1000-1	406 (400-1)	1000-1 1/8	406 (400-1 1/8)
CIRCLING	1000-1 393 (400-1)	1060-1 453 (500-1)	1060-1 1/2 453 (500-1 1/2)	1160-2 553 (600-2)

REIL Rwy 9

MIRL Rwy 9-27

PAC, 07 AUG 2025 to 02 OCT 2025

PAC, 07 AUG 2025 to 02 OCT 2025