

NDB GRO	332	APP CRS	104°	Rwy Ldg	7000
		TDZE	594		
		Apt Elev	607		

NDB RWY 9

BENJAMIN TAISACAN MANGLONA INTL (GRO)(PGRO)

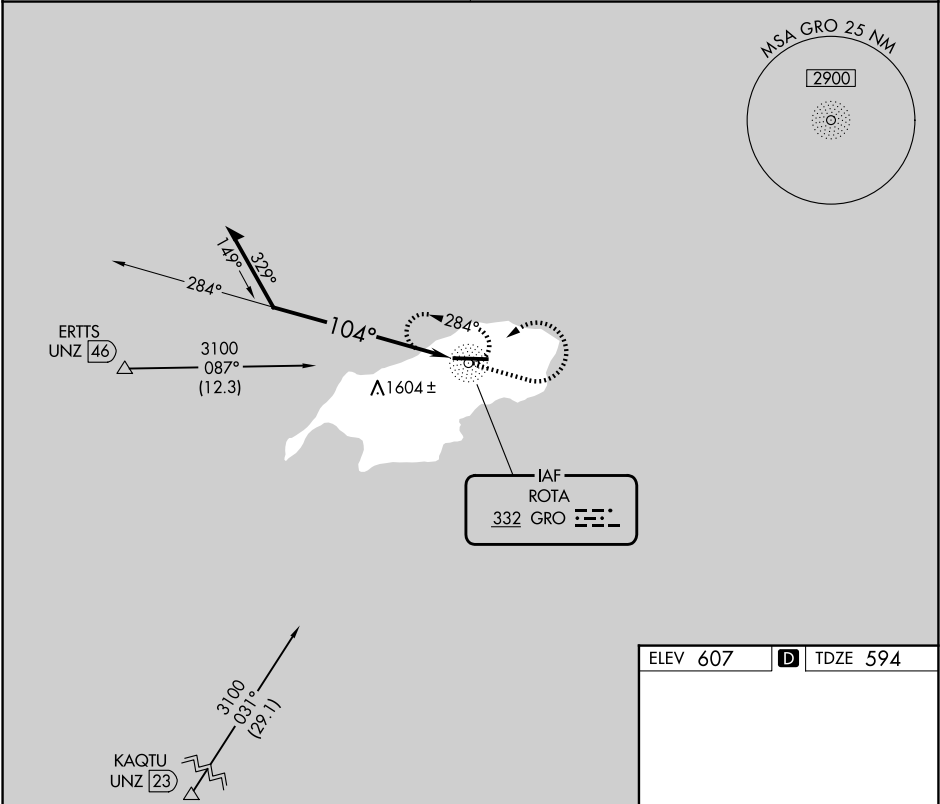
▼

⚠

When local altimeter setting not received, use Andersen AFB altimeter setting and increase all MDA 320 feet. Circling NA south of Rwy 9-27.

MISSED APPROACH: Climb to 2200 then climbing left turn to 3100 direct GRO NDB and hold.

GUAM CERAP	CTAF
120.5 263.0	123.6 0



Remain within 10 NM

2900

284°

104°

GRO NDB

2200

3100

GRO

CATEGORY	A	B	C	D
S-9	1800-1¼ 1206 (1200-1¼)	1800-1½ 1206 (1200-1½)	1800-3	1206 (1200-3)
CIRCLING	1800-1¼ 1193 (1200-1¼)	1800-1½ 1193 (1200-1½)	1800-3	1193 (1200-3)

ELEV 607

D

TDZE 594

104°

7000 X 150

0.3% UP

27

REIL Rwy 9 0

MIRL Rwy 9-27 0