

WAAS  
CH **90344**  
**W10A**

APP CRS  
**103°**

Rwy Ldg  
TDZE  
Apt Elev  
**5000**  
**3167**  
**3167**

**RNAV (GPS) RWY 10**  
MOUNTAIN HOME MUNI (U76)

RNP APCH-GPS.

▼

NA

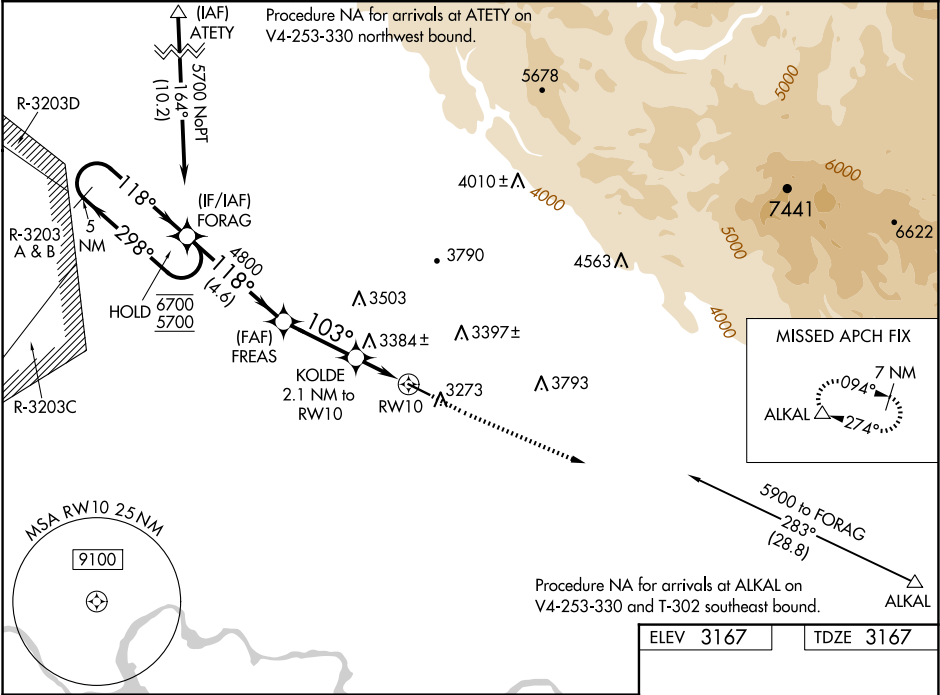
Rwy 10 helicopter visibility reduction below ¼ SM NA.  
Baro-VNAV NA. Hold-in-lieu NA when R-3203A/B/C/D is active. Use Mountain Home AFB altimeter setting.

MISSED APPROACH: Climb to 4300 then climbing left turn to 8300 direct ALKAL and hold, continue climb-in-hold to 8300.

KMUO ATIS  
**273.5**

MOUNTAIN HOME APP CON ★  
**124.8 259.1**

AUNICOM  
**122.8 (CTAF) 0**



5 NM Holding Pattern

FORAG

6700 ← 298°

5700 → 118°

GP 3.00°

TCH 43

4300

8300

ALKA

↑

↷

△

FREAS

4800

KOLDE

2.1 NM to RW10

RW10

↷

118°

103°

4800

3880

4.6 NM

2.9 NM

2.1 NM

103°

5000 X 75

3209

28

CATEGORY	A	B	C	D
LPV DA	3460-7⁄8 293 (300-7⁄8)			
LNAV/VNAV DA	3604-1¼ 437 (500-1¼)			
LNAV MDA	3680-1 513 (600-1)	3680-1¾ 513 (600-1¾)		
CIRCLING	3680-1 513 (600-1)	3780-1 613 (700-1)	3780-1¾ 613 (700-1¾)	4180-3 1013 (1100-3)

ELEV 3167

TDZE 3167

REIL Rwy 10 and 28

MIRL Rwy 10-28