

FORT CARSON, COLORADO

WAAS CH 43949 W31A	APCH CRS 309°	Rwy Idg TDZE Arpt Elev	4500 5826 5841
--------------------------	------------------	------------------------------	----------------------

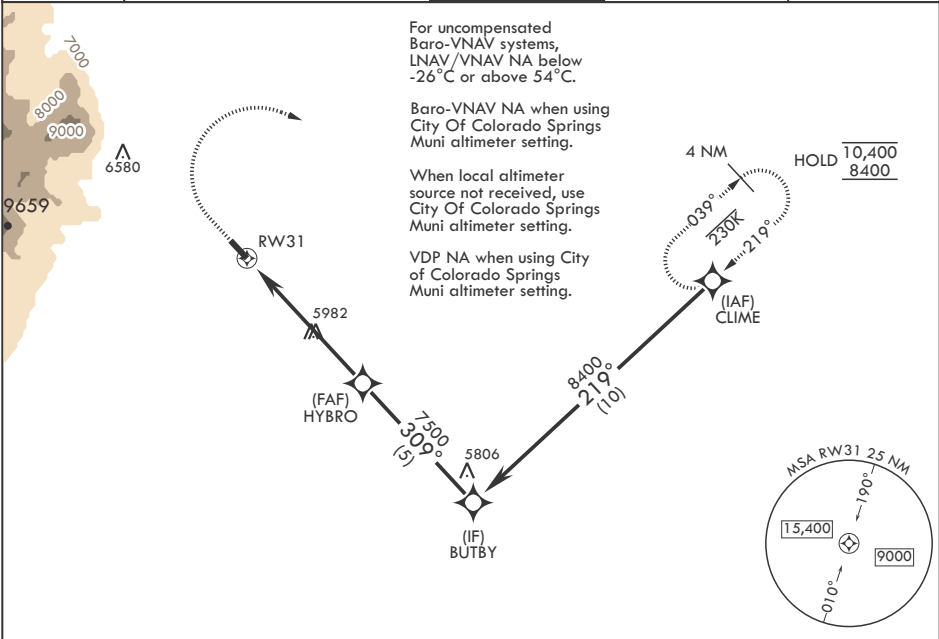
-(USA)

BUTTS AHP (FORT CARSON) (KFCS)

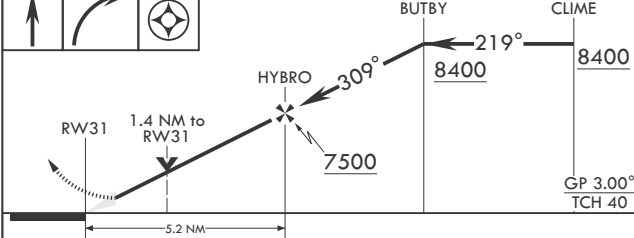
RNAV (GPS) RWY 31

RNP APCH - GPS	MISSED APPROACH: Climb to 6400 then climbing right turn to 8400 direct CLIME and hold.
* Circling NA SW of RWY 13-31.	

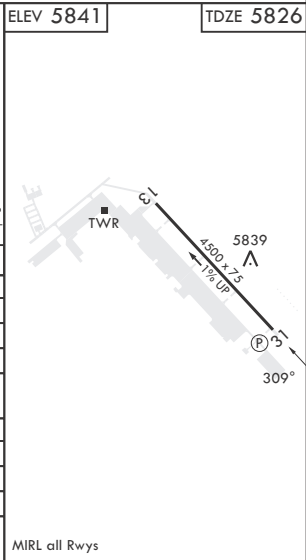
ATIS 108.8	SPRINGS APP CON/DEP CON 124.0 257.875	TOWER 125.5 229.4	GND CON 118.55 253.6	CLNC DEL 239.3
---------------	--	----------------------	-------------------------	-------------------



6400	8400	CLIME	ELEV 5841	TDZE 5826
------	------	-------	-----------	-----------



CATEGORY	A	B	C	D
LPV DA	6026-¾	200	(200-¾)	
LNAV/VNAV DA	6130-7/8	304	(300-7/8)	
LNAV MDA	6280-1 454 (500-1)	6280-1 454 (500-1)	6280-1 454 (500-1)	6280-1 454 (500-1)
CIRCLING*	6280-1 406 (500-1)	6400-1 526 (600-1)	6580-2 706 (800-2)	6880-3 1006 (1100-3)
CITY OF COLORADO SPRINGS MUNI ALTIMETER SETTING MINIMUMS				
LPV DA	6089-7/8	263	(300-7/8)	
LNAV/VNAV DA	6193-1	367	(400-1)	
LNAV MDA	6360-1 534 (500-1)	6360-1 534 (500-1)	6360-1 534 (500-1)	6360-1 534 (500-1)
CIRCLING*	6360-1 486 (500-1)	6480-1 606 (700-1)	6660-2 786 (800-2)	6960-3 1086 (1100-3)



FORT CARSON, COLORADO

Orig 23FEB23

38°42'N - 104°45'W

BUTTS AHP (FORT CARSON) (KFCS)

RNAV (GPS) RWY 31

SW-1, 07 AUG 2025 to 04 SEP 2025

SW-1, 07 AUG 2025 to 04 SEP 2025