

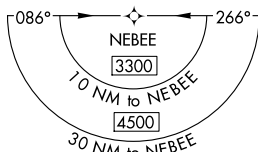
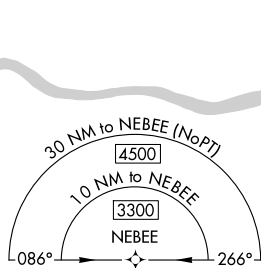
25107

RNAV (GPS) RWY 18
CHICKASHA MUNI (CHK)

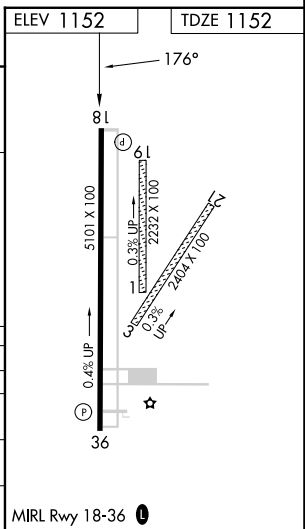
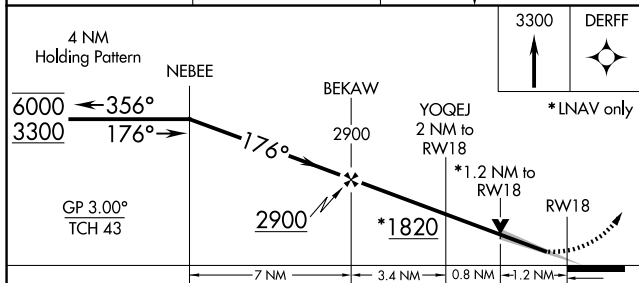
T Circling NA to Rwy's 1, 2, 19 and 20.
For uncompensated Baro-VNAV systems, LNAV/VNAV NA below -17°C or above 54°C.


MISSED APPROACH: Climb to 3300 direct DERFF and hold.

UNICOM
123.0 (CTAF) **L**



A 1645



CATEGORY		A	B	C	D
LPV	DA	1352- $3\frac{3}{4}$	200 (200- $3\frac{3}{4}$)		NA
LNAV/ VNAV	DA	1482-1 $\frac{1}{8}$	330 (400-1 $\frac{1}{8}$)		NA
LNAV	MDA	1560-1	408 (500-1)	1560-1 $\frac{1}{8}$ 408 (500-1 $\frac{1}{8}$)	NA
 CIRCLING		1600-1 448 (500-1)	1620-1 468 (500-1)	1700-1 $\frac{1}{2}$ 548 (600-1 $\frac{1}{2}$)	NA

CHICKASHA MUNI (CHK)
RNAV (GPS) RWY 18

SC-1, 07 AUG 2025 to 04 SEP 2025