

APP CRS
012°

Rwy Idg
3304

TDZE
40

Apt Elev
41

RNAV (GPS) RWY 1

WOODBINE MUNI (OBI)

RNP APCH

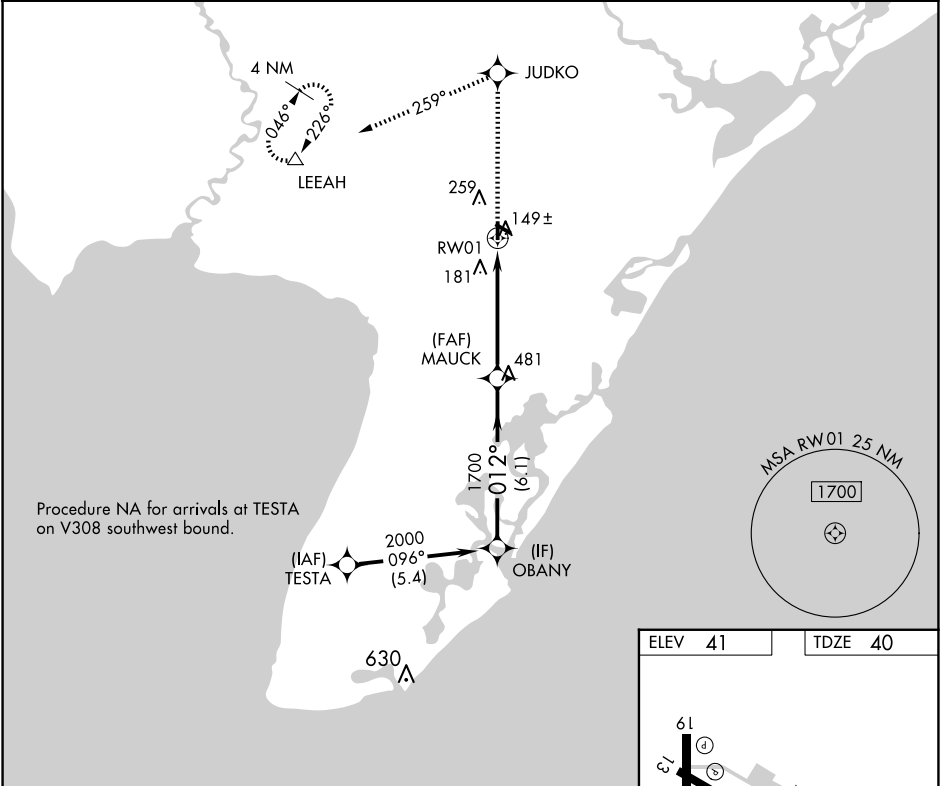
▼

NA

When local altimeter setting not received, use Millville Muni altimeter setting and increase all MDA 60 feet, and increase LNAV and Circling Cat C visibility ¼ mile. VDP NA when using Millville Muni altimeter setting. Circling Rwy 13, 19, 31 NA at night. Rwy 1 helicopter visibility reduction below ¾ SM NA.

MISSED APPROACH: Climb to 2000 direct JUDKO and on track 259° to LEEAH and hold.

AWOS-3 120.475	ATLANTIC CITY APP CON 124.6 327.125	GCO 121.725	UNICOM 123.05 (CTAF) 0
--------------------------	---	-----------------------	----------------------------------



OBANY

2000

012°

MAUCK

1700

3.05°

TCH 40

1.2 NM to RW01

RW01

6.1 NM

3.9 NM

1.2 NM

2000

JUDKO

tr 259°

LEEAH

CATEGORY	A	B	C	D
LNAV MDA	440-1	400 (400-1)	440-1½ 400 (400-1½)	NA
CIRCLING	620-1	579 (600-1)	620-1½ 579 (600-1½)	NA

ELEV 41

TDZE 40

61

13

3304 X 75

3074 X 75

0.5% UP

1

012°

REIL Rwy 19 and 31

MIRL Rwy 1-19 and 13-31 0

NE-2, 07 AUG 2025 to 04 SEP 2025

NE-2, 07 AUG 2025 to 04 SEP 2025