

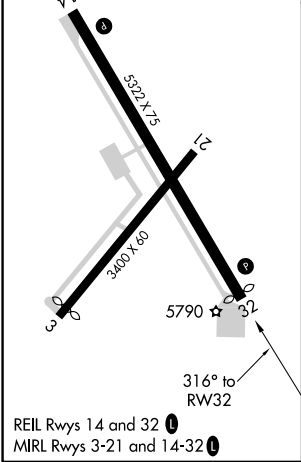
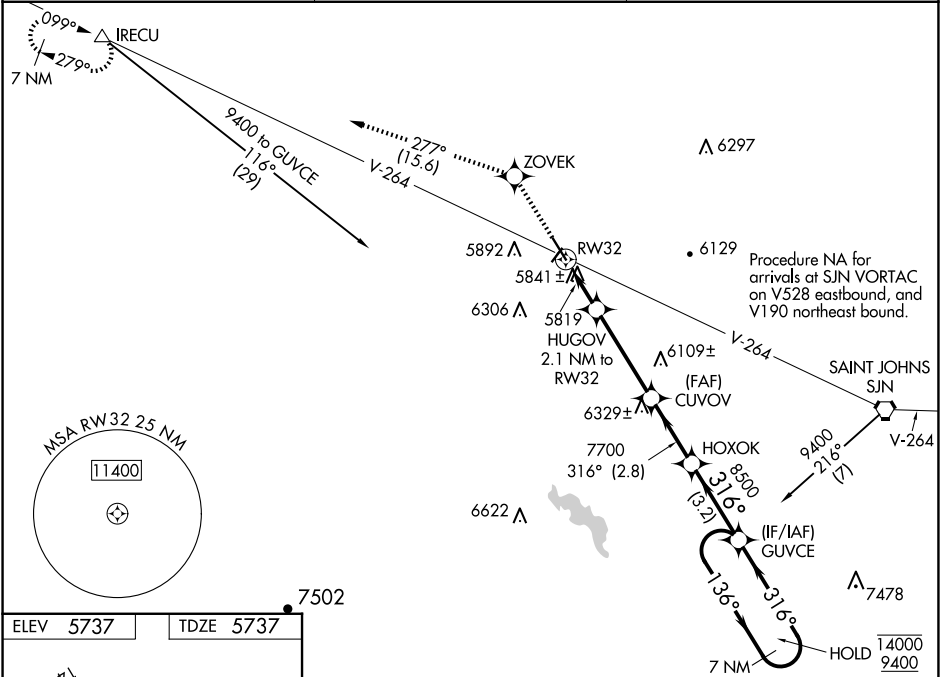
WAAS CH 42643 W32A	APP CRS 316°	Rwy Idg TDZE 5230 Apt Elev 5737
--	------------------------	---

RNAV (GPS) RWY 32

ST JOHNS INDUSTRIAL AIR PARK (SJN)

RNP APCH. <div><div></div><div>Rwy 32 helicopter visibility reduction below 1 SM NA. For uncompensated Baro-VNAV systems, LNAV/VNAV NA below -13°C or above 54°C. Rwy 32 Straight-in NA at night. Circling Rwy 3, 32 NA at night.</div></div>	MISSED APPROACH: Climb to 9400 direct ZOVEK and on track 277° to IRECU and hold.
--	--

ASOS 134.225	ALBUQUERQUE CENTER 124.325 288.25	UNICOM 122.8 (CTAF) 0
------------------------	---	---------------------------------



9400	ZOVEK	tr 277°	IRECU	VGSI and descent angles not coincident (VGSI Angle 3.00/TCH 40).
*LNAV only	HUGOV 2.1 NM to RW32	CUVOV 7700	HOXOK 8500	7 NM Holding Pattern
	2.1 NM	3.7 NM	2.8 NM	3.2 NM
CATEGORY	A	B	C	D
LPV DA	5987-1	250 (300-1)		NA
LNAV/VNAV DA	6167-1¼	430 (500-1¼)		NA
LNAV MDA	6140-1	403 (500-1)		NA
CIRCLING	6260-1 523 (600-1)	6280-1 543 (600-1)		NA