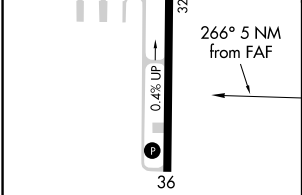
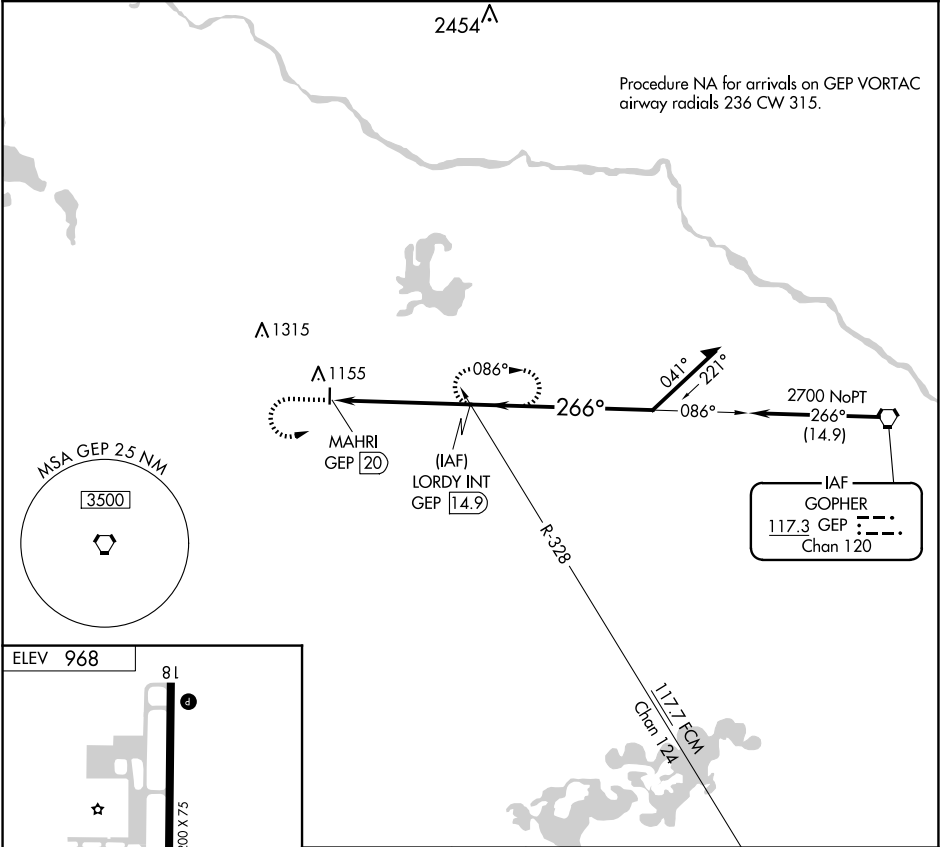


VORTAC GEP	APP CRS	Rwy Idg	N/A
<b>117.3</b>	<b>266°</b>	TDZE	N/A
Chan <b>120</b>		Apt Elev	<b>968</b>

VOR-A  
BUFFALO MUNI (CfE)

⚠ When local altimeter setting not received, use Maple Lake altimeter setting. When VGSI inoperative, procedure NA at night.	MISSED APPROACH: Climb to 2200 then climbing left turn to 3600 via GEP VORTAC R-266 to LORDY INT/GEP VORTAC 14.9 DME and hold.
--	--

AWOS-3PT <b>120.45</b>	MINNEAPOLIS APP CON <b>126.5 335.65</b>	GCO <b>121.725</b>	UNICOM <b>122.8</b> (CTAF) <b>0</b>
---------------------------	--	-----------------------	--



REIL Rwy 18 and 36  
MIRL Rwy 18-36 **0**

FAF to MAP 5 NM						CATEGORY	A	B	C	D
Knots	60	90	120	150	180	☑ CIRCLING	1580-1	612 (700-1)	1580-1¾ 612 (700-1¾)	NA
Min:Sec	5:00	3:20	2:30	2:00	1:40					