

APP CRS	Rwy Idg	4870
010°	TDZE	722
	Apt Elev	726

RNAV (GPS) RWY 1

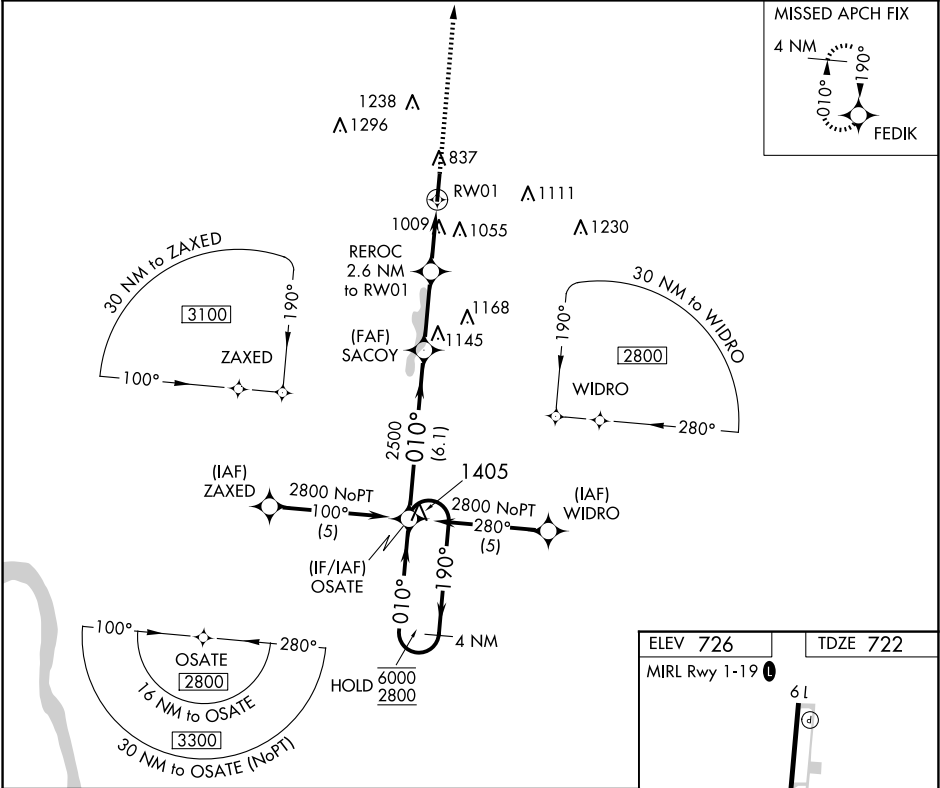
JAMES A RHODES (JRO)

RNP APCH - GPS.

Procedure NA at night. Rwy 1 helicopter visibility reduction below 1 SM NA.

MISSED APPROACH:  
Climb to 2800 direct FEDIK and hold.

AWOS-3PT 118.825	HUNTINGTON APP CON 128.4 270.1	UNICOM 122.7(CTAF) 0
---------------------	-----------------------------------	-------------------------



4 NM Holding Pattern		Visual Segment - Obstacles.		2800	FEDIK
OSATE		SACYO		REROC 2.6 NM to RW01	RW01
6000 2800		2500		1540	
190° 010°		010°		010°	
6.1 NM		2.8 NM		2.6 NM	
CATEGORY	A	B	C	D	
LNAV MDA	1300-1	578 (600-1)	1300-1½	578 (600-1½)	
CIRCLING	1340-1 614 (700-1)	1480-1 754 (800-1)	1680-3	954 (1000-3)	