

WAAS CH 73042 W36A	APP CRS 358°	Rwy Idg 4001 TDZE 1226 Apt Elev 1226
--	------------------------	---

RNAV (GPS) RWY 36
CHEROKEE COUNTY RGNL (CKP)


RNP APCH.

T Rwy 36 helicopter visibility reduction below $\frac{3}{4}$ SM NA.
Circling to Rwy 1-19 NA. Circling Rwy 18 NA at night.

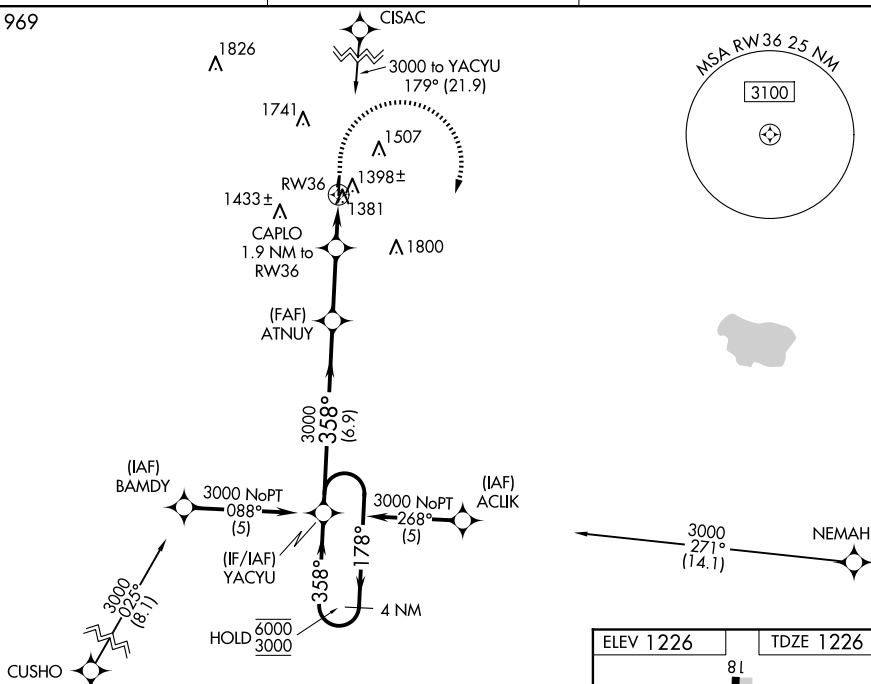
MISSED APPROACH: Climb to 1800 then climbing right turn to 3000 direct YACYU and hold.

AWOS-3
119.225

MINNEAPOLIS CENTER
125.025 235.625

UNICOM
122.8 (CTAF) 

Δ 1969



4 NM Holding Pattern

YACUY

ATNUY 3000

3000

178°

358°

GP 3.60°

TCH 40

CAPLO 1.9 NM to RW36 *1 NM to RW36

*2000

*LNAV only.

6.9 NM

2.6 NM

0.9 NM

1 NM

YACUY

ATNUY

CAPLO

RW36

RW36

CATEGORY	A	B	C	D
LPV DA	1492-1	266 (300-1)		NA
LNAV/VNAV DA	1540-1	314 (400-1)		NA
LNAV MDA	1660-1	434 (500-1)		NA
C CIRCLING	1760-1 534 (600-1)	1820-1 594 (600-1)		NA

