

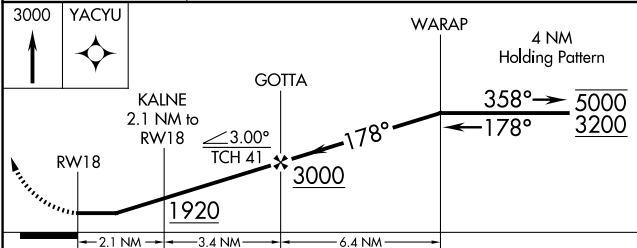
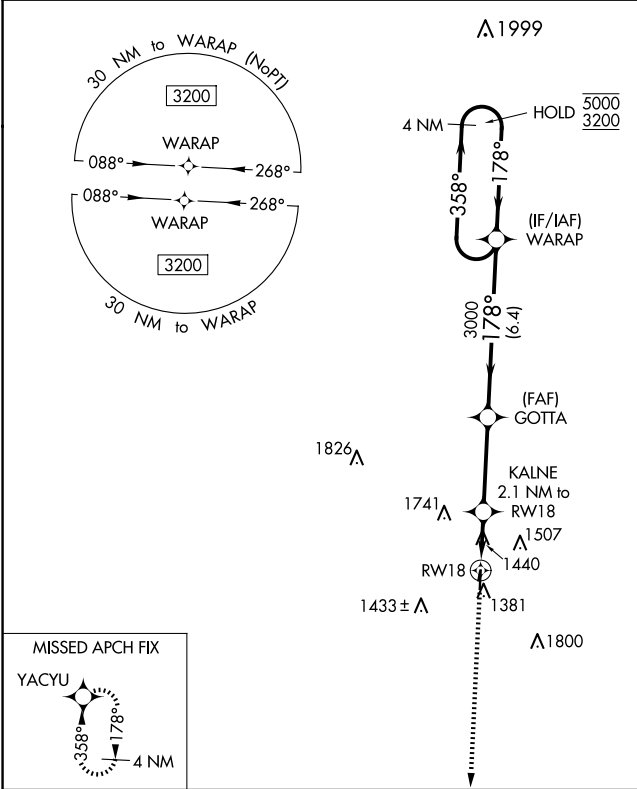
APP CRS	Rwy Idg	4001
178°	TDZE	1214
	Apt Elev	1226

RNAV (GPS) RWY 18

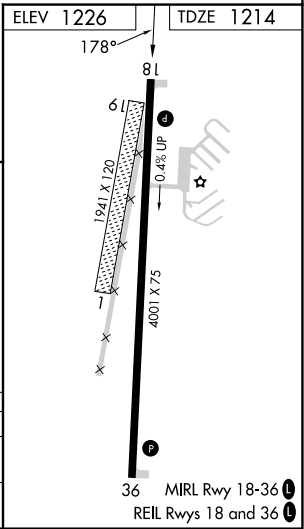
CHEROKEE COUNTY RGNL (CKP)

RNP APCH.	MISSED APPROACH: Climb to 3000 direct YACYU and hold.
<div><div>▼</div><div>⚠</div></div> Circling NA to Rwys 1 and 19. Rwy 18 helicopter visibility reduction below 1 SM NA. Rwy 18 Straight-in and Circling NA at night.	

AWOS-3 119.225	MINNEAPOLIS CENTER 125.025 235.625	UNICOM 122.8 (CTAF) 0
-------------------	---------------------------------------	--------------------------



CATEGORY	A	B	C	D
LNVA MDA	1740-1 526 (600-1)	1740-1½ 526 (600-1½)		
CIRCLING	1760-1 534 (600-1)	1820-1 594 (600-1)	2100-2½ 874 (900-2½)	2160-3 934 (1000-3)



NC-3, 07 AUG 2025 to 04 SEP 2025

NC-3, 07 AUG 2025 to 04 SEP 2025