

WAAS CH 97532 W16A	APP CRS 164°	Rwy Idg TDZE Apt Elev	4500 1299 1304
--	------------------------	-----------------------------	---

RNAV (GPS) RWY 16

DODGE CENTER (TOB)

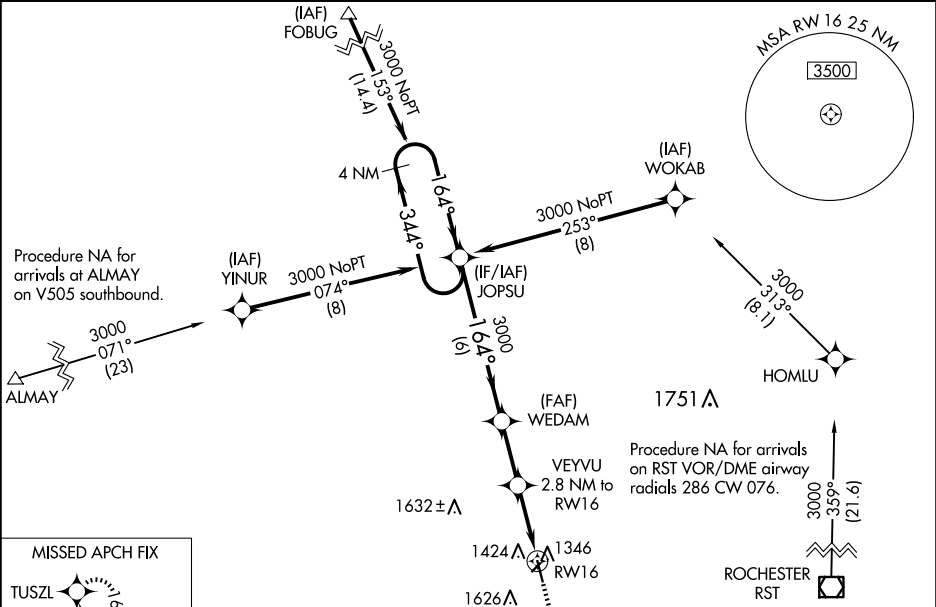
⚠

⚠

For uncompensated Baro-VNAV systems, LNAV/VNAV NA below -17°C (2°F) or above 54°C (130°F). DME/DME RNP-0.3 NA. Baro-VNAV and VDP NA with Rochester Intl altimeter setting. When local altimeter setting not received, use Rochester Intl altimeter setting and increase all DA 39 feet and all MDA 40 feet, and increase LNAV/VNAV all Cats, LNAV Cat C visibility ⅓ mile, and Circling Cat C visibility ¼ mile.

MISSED APPROACH: Climb to 3000 direct TUSZL and hold.

AWOS-3 119.075	ROCHESTER APP CON ★ 119.8 251.125	CTAF 122.9 0
--------------------------	---	------------------------



GP 3.00°
TCH 40

4 NM
Holding Pattern

3000 ← 344°
164° → 3000

6 NM

2.4 NM

1.7 NM

1.1 NM

3000

TUSZL

*LNAV only.

*2220

1.1 NM to RW16

RW16

REIL Rwy 16 and 34 0

MIRL Rwy 16-34 0

CATEGORY	A	B	C	D
LPV DA	1549-1	250 (300-1)		NA
LNAV/VNAV DA	1586-1	287 (300-1)		NA
LNAV MDA	1680-1	381 (400-1)	1680-1½ 381 (400-1½)	NA
CIRCLING	1960-1	656 (700-1)	1960-1¾ 656 (700-1¾)	NA

ELEV 1304

TDZE 1299

164° to RW16

91

20

450 X 75

2383 X 200

34