

| | | | |
|--|------------------------|---|-------------|
| WAAS CH 82425 W14A | APP CRS 141° | Rwy Idg TDZE 998 Apt Elev 998 | 5507 |
|--|------------------------|---|-------------|

RNAV (GPS) RWY 14

NEW RICHMOND RGNL (R.NH)

RNP APCH.

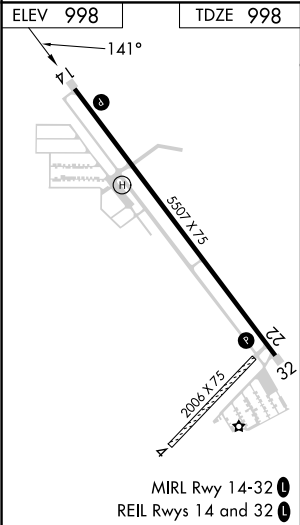
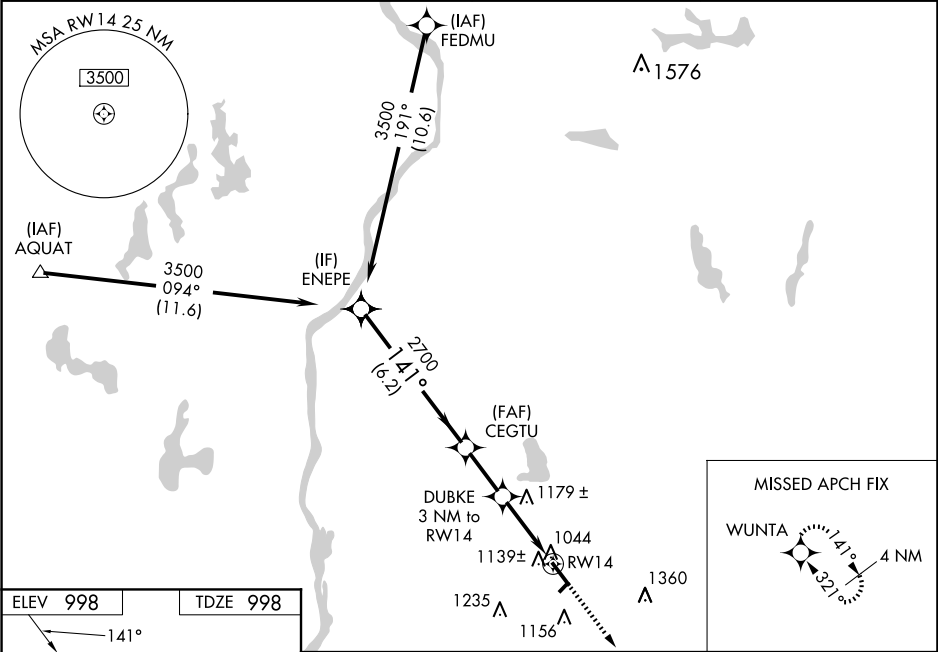
▼

▲

Baro-VNAV NA when using Osceola altimeter setting. For uncompensated Baro-VNAV systems, LNAV/VNAV NA below -16°C (4°F) or above 37°C (98°F). Rwy 14 helicopter visibility reduction below ¾ SM NA. When local altimeter setting not received, use Osceola altimeter setting and increase all DA/MDA 40 feet; Circling visibility Cats C and D ¼ SM.

MISSED APPROACH: Climb to 3500 direct WUNTA and hold.

| | | | |
|------------------------|--|-----------------------|-----------------------------------|
| AWOS-3 120.0 | MINNEAPOLIS APP CON 121.2 335.65 | GCO 121.725 | UNICOM 122.975 (CTAF) 0 |
|------------------------|--|-----------------------|-----------------------------------|



| | | | | | |
|--|--------------------|-------------|---------|--------------|--------------------------|
| VGSI and RNAV glidepath not coincident (VGSI Angle 3.00/TCH 40). | | | | 3500 | WUNTA |
| | | | | ↑ | ✧ |
| | | | | *LNAV only | |
| | | | | ENEPE | CEGTU |
| | | | | 3500 | 2700 |
| | | | | GP 3.00° | DUBKE 3 NM to RW14 |
| | | | | TCH 50 | 2000* |
| | | | | 6.2 NM | 2.2 NM |
| | | | | 3 NM | RW14 |
| CATEGORY | A | B | C | D | |
| LPV DA | 1272-1 274 (300-1) | | | | |
| LNAV/VNAV DA | 1320-1 322 (400-1) | | | | |
| LNAV MDA | 1440-1 | 442 (500-1) | 1440-1¾ | 442 (500-1¾) | |
| CIRCLING | 1540-1 | 542 (600-1) | 1660-1¾ | 1660-2 | |
| | | | | | 662 (700-1¾) 662 (700-2) |