

WAAS CH 42831 W35A	APP CRS 354°	Rwy Idg 5003 TDZE 215 Apt Elev 229
--	------------------------	---

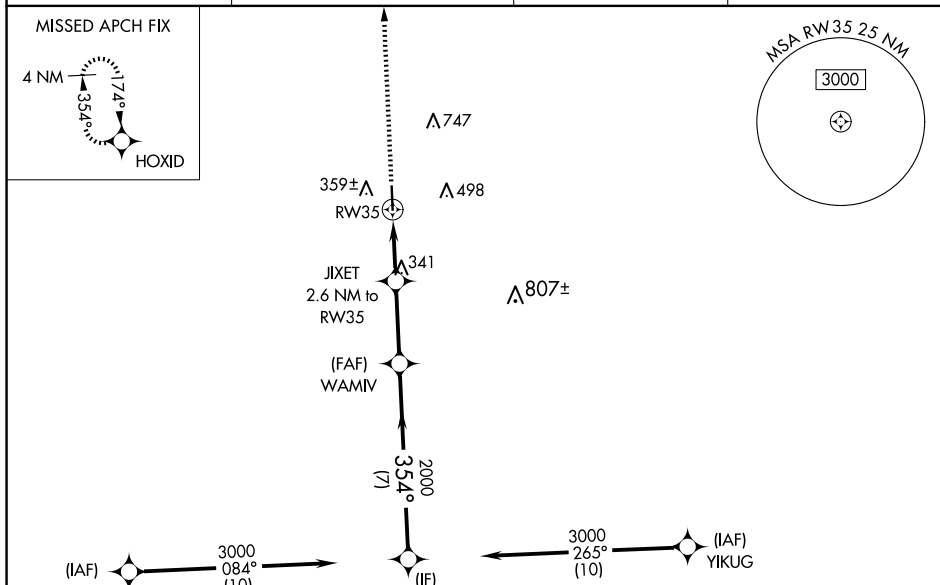
RNAV (GPS) RWY 35
NAVASOTA MUNI (60R)

RNP APCH-GPS.

T Rwy 35 helicopter visibility reduction below $\frac{3}{4}$ NA. Baro-VNAV and VDP NA when using 11R
A altimeter setting. For uncompensated Baro-VNAV systems, LNAV/VNAV NA below -15°C or
 above 54°C . When local altimeter setting not received, use 11R altimeter setting and increase LPV
 DA to 515 feet and all visibilities $\frac{1}{8}$ SM; increase LNAV/VNAV DA to 515 feet and all visibilities
 $\frac{1}{8}$ SM; increase all MDAs 60 feet and LNAV visibility Cat C and D $\frac{1}{4}$ SM.

MISSED APPROACH: Climb to 3000 direct HOXID and hold.

AWOS-3PT 120.925	HOUSTON APP CON 134.3 360.85	CTAF 122.9	123.3 
----------------------------	--	----------------------	--



ELEV 229		TDZE 215
----------	--	----------

