

WAAS  
CH **42931**  
**W17A**

APP CRS  
**174°**

Rwy Idg  
TDZE **229**  
Apt Elev **229**

**RNAV (GPS) RWY 17**

NAVASOTA MUNI (60R)

RNP APCH - GPS.

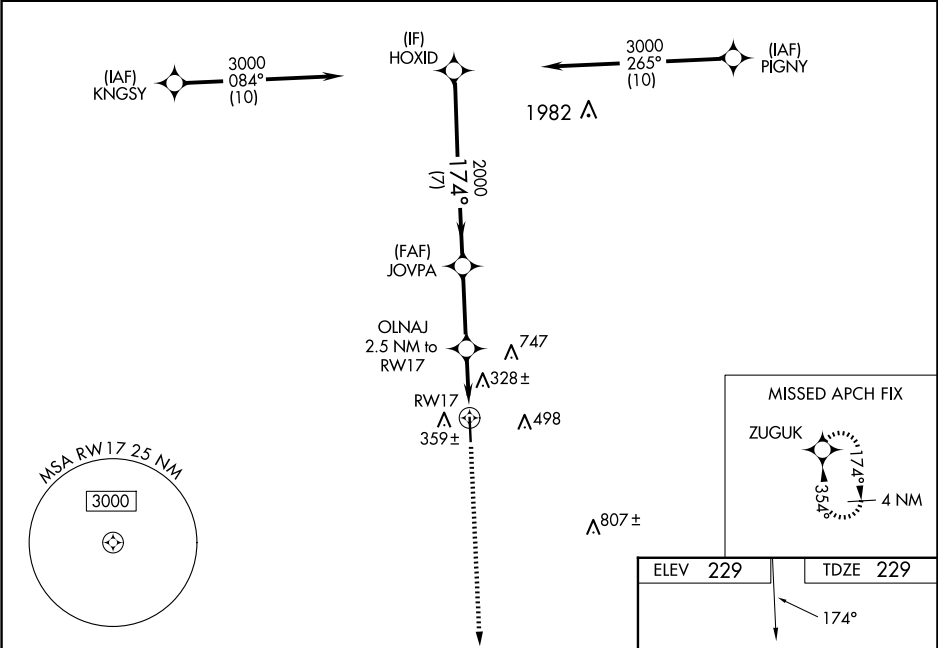
T

A

Rwy 17 helicopter visibility reduction below  $\frac{3}{4}$  NA. Baro-VNAV and VDP NA when using 11R altimeter setting. For uncompensated Baro-VNAV systems, LNAV/VNAV NA below -15C or above 54C. When local altimeter setting not received, use 11R altimeter setting and increase LPV DA to 529 feet and all visibilities  $\frac{1}{8}$  SM; increase LNAV/VNAV DA to 635 feet and all visibilities  $\frac{1}{8}$  SM; increase all MDAs 60 feet and LNAV visibility Cat C and D  $\frac{1}{8}$  SM.

MISSED APPROACH: Climb to 3000 direct ZUGUK and hold.

AWOS-3PT <b>120.925</b>	HOUSTON APP CON <b>134.3 360.85</b>	CTAF <b>122.9</b>	<b>123.3 0</b>
----------------------------	--	----------------------	----------------



HOXID

3000

174°

JOVPA

2000

OLNAJ

2.5 NM to RW17

1 NM to RW17

RW17

GP 3.00°  
TCH 45

2000

1060

7 NM

3 NM

1.5 NM

1 NM

3000

ZUGUK

CATEGORY	A	B	C	D
LPV DA		479-1	250 (300-1)	
LNAV/VNAV DA		585-1	356 (400-1)	
LNAV MDA		580-1	351 (400-1)	

ELEV 229

TDZE 229

174°

35

5003 X 75

0.7% UP

REIL Rwy 17 and 35

MIRL Rwy 17-35 0