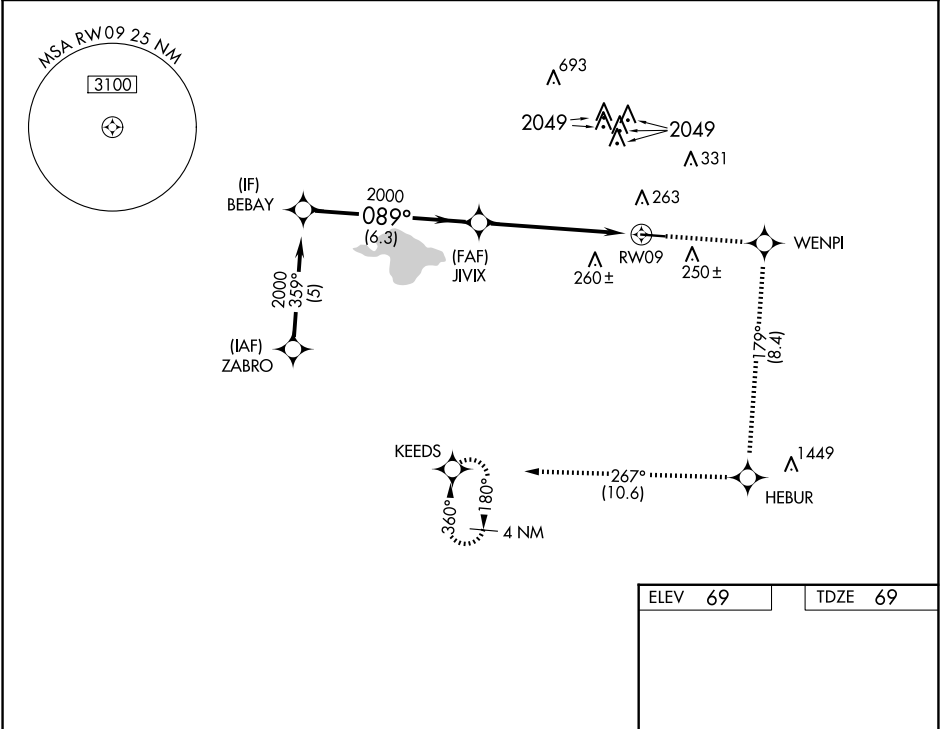



APP CRS	Rwy Idg	5002
089°	TDZE	69
	Apt Elev	69

RNAV (GPS) RWY 9
HOUSTON/SOUTHWEST (A.XH)

RNP APCH.		MISSED APPROACH: Climb to 2700 direct WENPI and on track 179° to HEBUR and on track 267° to KEEDS and hold.	
<div><div></div><div>Circling Rwy 27 NA at night. Rwy 9 helicopter visibility reduction below ¾ SM NA.</div></div>			
AWOS-3 123.625	HOUSTON APP CON 123.8 257.7	CLNC DEL 120.8	UNICOM 123.0 (CTAF) 0



VGSI and descent angles not coincident (VGSI Angle 3.50/TCH 50).		2700 ↑	WENPI ✧	tr 179°	HEBUR ✧	tr 267°	KEEDS ✧	
BEBAY		JIVIX		1.2 NM to RW09		RW09		
2000	089°	2000	089°					
6.3 NM		4.6 NM		1.2 NM				
CATEGORY		A	B	C	D			
LNAV MDA	580-1	511 (600-1)	580-1½ 511 (600-1½)	NA				
CIRCLING	620-1	551 (600-1)	700-1¾ 631 (700-1¾)	NA				
REIL Rwy 9 and 27 ① MIRL Rwy 9-27 ①								

SC-5, 07 AUG 2025 to 04 SEP 2025

SC-5, 07 AUG 2025 to 04 SEP 2025