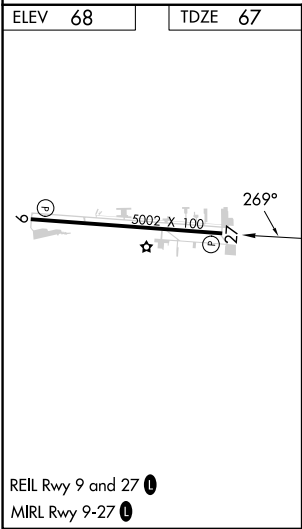
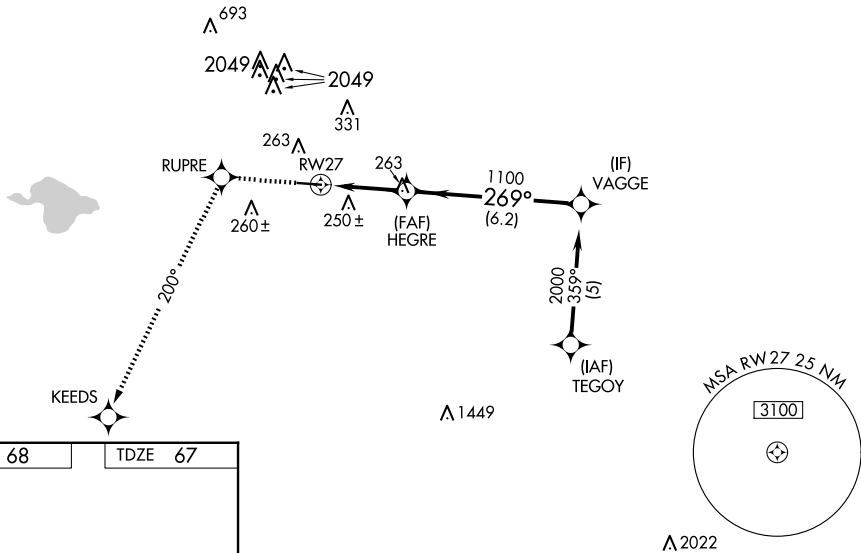


WAAS CH 81903 W27A	APP CRS 269°	Rwy Idg 5002 TDZE 67 Apt Elev 68
----------------------------------------	------------------------	-------------------------------------------------------------

RNAV (GPS) RWY 27
HOUSTON/SOUTHWEST (A.XH)

RNP APCH. ▼ ▲ NA For uncompensated Baro-VNAV systems, LNAV/VNAV NA below -1.5°C (5°F) or above 54°C (130°F). Rwy 27 helicopter visibility reduction below ¾ SM NA. Obtain local altimeter setting on CTAF; when not received use William P. Hobby altimeter setting and increase all DAs/MDA's 40 feet, and LPV, LNAV Cat C visibility ¼ mile. Baro-VNAV NA when using William P. Hobby altimeter setting.		MISSED APPROACH: Climb to 2700 direct RUPRE and via 200° track to KEEDS.	
AWOS-3 123.625	HOUSTON APP CON 123.8 257.7	CLNC DEL 120.8	UNICOM 123.0 (CTAF) 0

RADAR REQUIRED



2700	RUPRE	tr 200°	KEEDS	VAGGE
			HEGRE	
			RW27	
			1100	
			269°	
			2000	
			GP 3.00°	
			TCH 45	
			3.1 NM	6.2 NM
CATEGORY	A	B	C	D
LPV DA	367-1	300 (300-1)		NA
LNAV/VNAV DA	604-2	537 (600-2)		NA
LNAV MDA	560-1	493 (500-1)	560-1¼ 493 (500-1¼)	NA