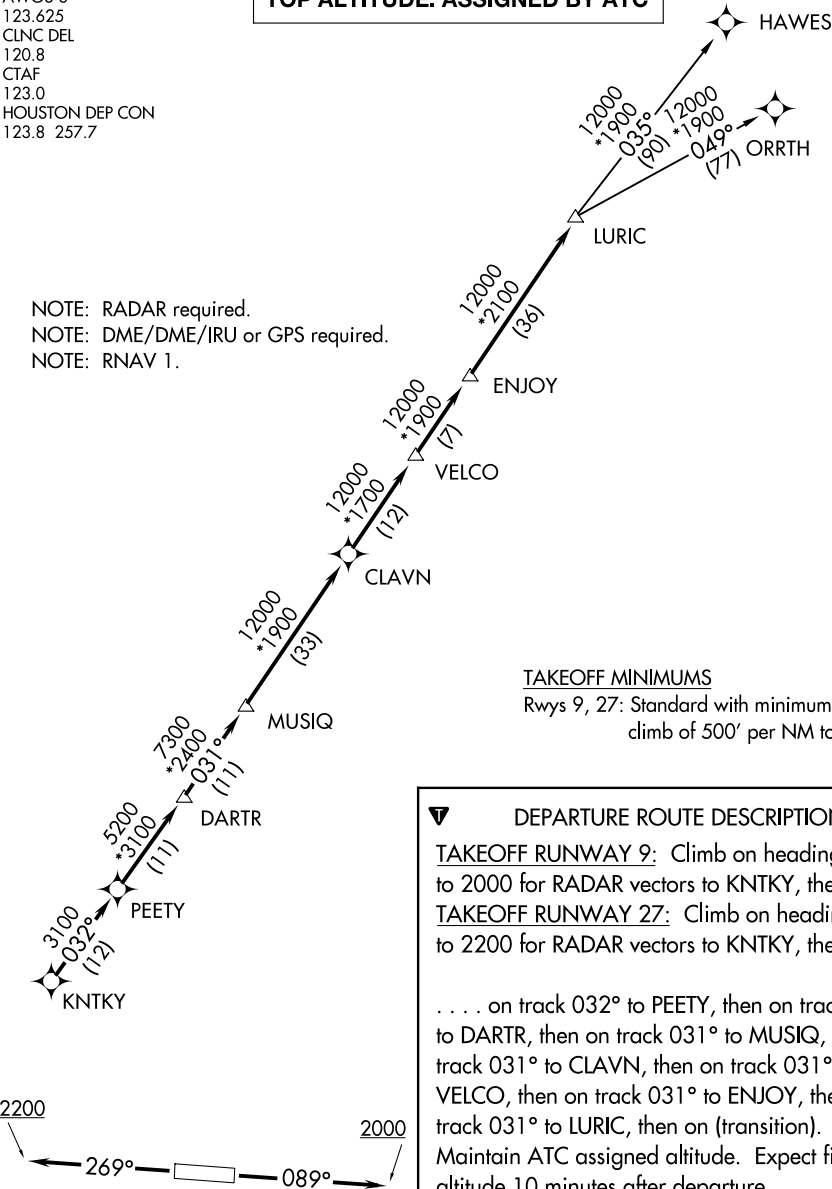


AWOS-3
123.625
CLNC DEL
120.8
CTAF
123.0
HOUSTON DEP CON
123.8 257.7

TOP ALTITUDE: ASSIGNED BY ATC

NOTE: RADAR required.
NOTE: DME/DME/IRU or GPS required.
NOTE: RNAV 1.



TAKEOFF MINIMUMS

Rwys 9, 27: Standard with minimum
climb of 500' per NM to 580.



DEPARTURE ROUTE DESCRIPTION

TAKEOFF RUNWAY 9: Climb on heading 089°
to 2000 for RADAR vectors to KNTKY, then . . .
TAKEOFF RUNWAY 27: Climb on heading 269°
to 2200 for RADAR vectors to KNTKY, then . . .

. . . on track 032° to PEETY, then on track 032°
to DARTR, then on track 031° to MUSIQ, then on
track 031° to CLAVN, then on track 031° to
VELCO, then on track 031° to ENJOY, then on
track 031° to LURIC, then on (transition).
Maintain ATC assigned altitude. Expect filed
altitude 10 minutes after departure.

HAWES TRANSITION (LURIC8.HAWES)
ORRTH TRANSITION (LURIC8.ORRTH)

NOTE: Chart not to scale.