

SC-5, 07 AUG 2025 to 04 SEP 2025

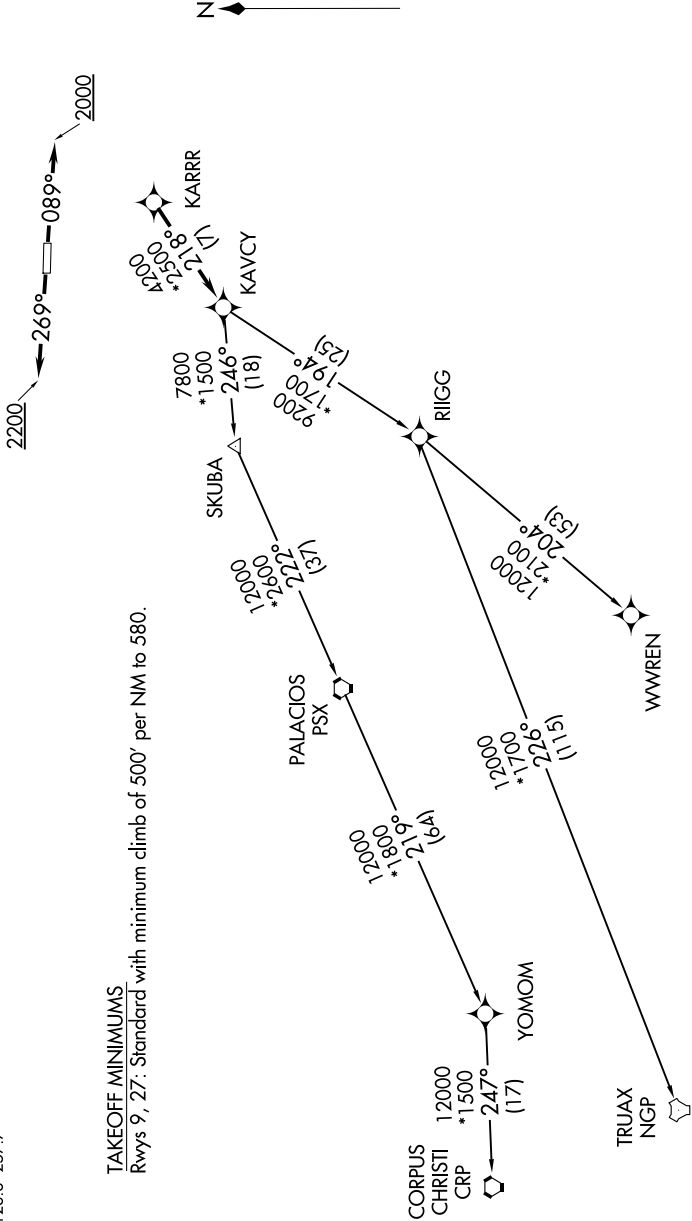
AWOS-3  
123.625  
CTAF  
123.0  
CINC DEL  
120.8  
HOUSTON DEP CON  
123.8 257.7

RNAV-1 DME/DME/IRU or GPS.

RADAR required.

TOP ALTITUDE:  
ASSIGNED BY ATC

TAKEOFF MINIMUMS  
Rwys 9, 27: Standard with minimum climb of 500' per NM to 580.



(NARRATIVE ON FOLLOWING PAGE)

NOTE: Chart not to scale.

SC-5, 07 AUG 2025 to 04 SEP 2025