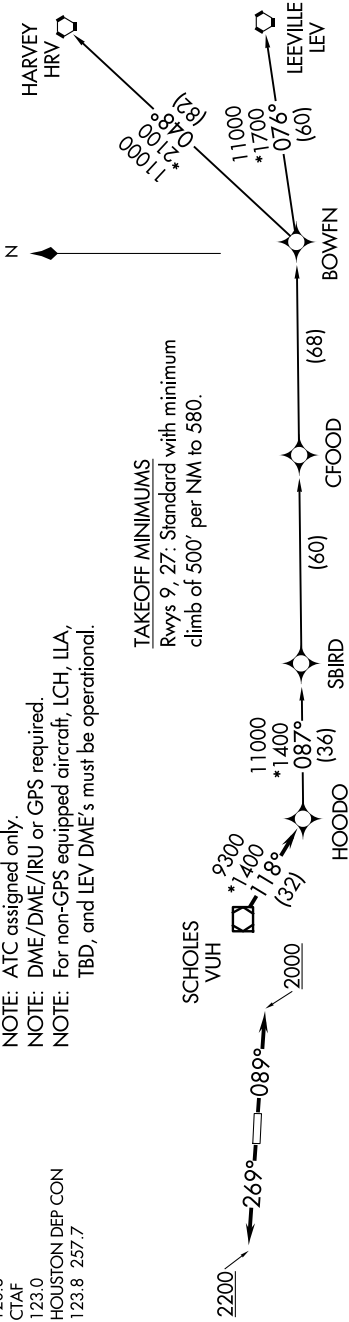


AWOS-3
123.625
CLNC DEL
120.8
CTAF
123.0
HOUSTON DEP CON
123.8 257.7

- NOTE: RNAV 1.
- NOTE: RADAR required.
- NOTE: ATC assigned only.
- NOTE: DME/DME/IRU or GPS required.
- NOTE: For non-GPS equipped aircraft, LCH, ILLA, TBD, and LEV DME's must be operational.



HOODO SEVEN DEPARTURE (RNAV)
(HOODO7.HOODO) 07OCT21

AL-6575 (FAA)

HOUSTON/SOUTHWEST (A.X.H)
HOUSTON, TEXAS

DEPARTURE ROUTE DESCRIPTION

- TAKEOFF RUNWAY 9: Climb on heading 089° to 2000, for RADAR vectors to VUH VOR/DME, thence . . .
- TAKEOFF RUNWAY 27: Climb on heading 269° to 2200, for RADAR vectors to VUH VOR/DME, thence . . .

. . . on track 118° to HOODO, then on (transition). Maintain ATC assigned altitude.
Expect filed altitude 10 minutes after departure.

- BOWFN TRANSITION (HOODO7.BOWFN)
- CFOOD TRANSITION (HOODO7.CFOOD)
- HARVEY TRANSITION (HOODO7.HRV)
- LEEVILLE TRANSITION (HOODO7.LEV)
- SBIRD TRANSITION (HOODO7.SBIRD)