

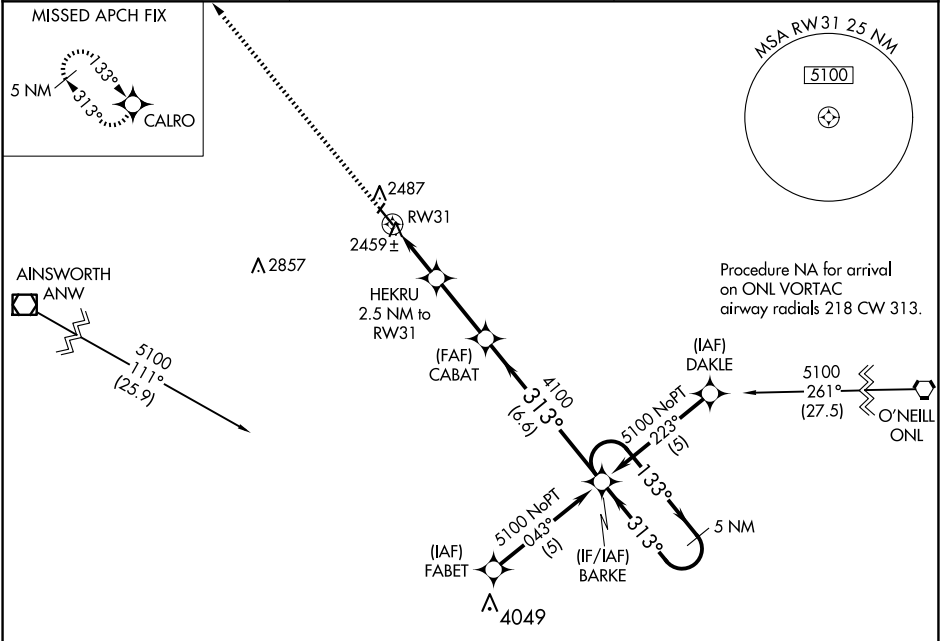
WAAS CH 69317 W31A	APP CRS 313°	Rwy Idg TDZE 2349 Apt Elev 2349
--	------------------------	---

RNAV (GPS) RWY 31

ROCK COUNTY (RBE)

<div><div>▼</div><div>NA</div></div> <div>When VGSI inoperative, Circling Rwy 13 NA at night. Baro-VNAV NA. DME/DME RNP-0.3 NA. Use Ainsworth altimeter setting; when not received, use O'Neill altimeter setting and increase all DA 59 feet and all MDA 60 feet. Circling NA to Rwy 2-20.</div>	MISSED APPROACH: Climb to 4600 direct CALRO and hold.
---	---

ANW AWOS-3 118.325	DENVER CENTER 127.95 338.2	CTAF 122.90
------------------------------	--------------------------------------	-----------------------



ELEV 2349	TDZE 2349
-----------	-----------

