

WAAS

CH **40029**

**W31A**

APP CRS

**311°**

Rwy Idg

**7000**

TDZE

**202**

Apt Elev

**208**

**RNAV (GPS) RWY 31**

GRENADA MUNI (GNTF)

RNP APCH.

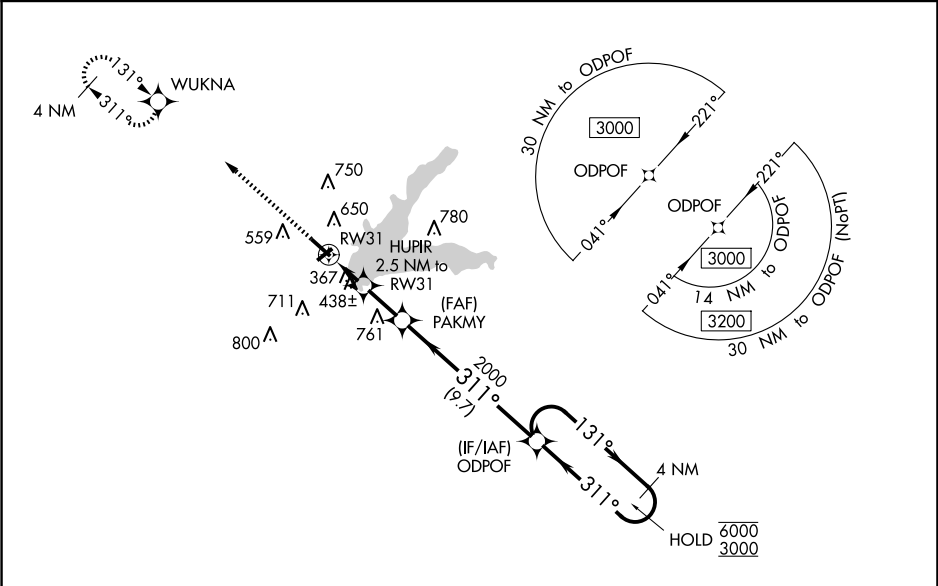
▼

▲

Baro-VNAV and VDP NA when using Greenwood altimeter setting. Rwy 31 helicopter visibility reduction below  $\frac{3}{4}$  SM NA. For uncompensated Baro-VNAV systems, LNAV/VNAV NA below -9°C or above 46°C. When local altimeter setting not received use Greenwood altimeter setting: increase all DAs 65 feet and visibility LNAV/VNAV Cat C and D  $\frac{1}{8}$  SM; increase all MDAs 80 feet and visibility LNAV Cats C and D and Circling all Cats  $\frac{5}{8}$  SM. Circling Rwy 4, 22, NA at night.

MISSED APPROACH:  
Climb to 3000 direct WUKNA and hold.

AWOS-3PT <b>118.025</b>	MEMPHIS CENTER <b>128.5 279.55</b>	UNICOM <b>122.8 (CTAF)</b>
----------------------------	---------------------------------------	-------------------------------



ELEV 208

TDZE 202

1025

3000

WUKNA

\*LNAV only.

HUPIR 2.5 NM to RW31

PAKMY 2000

ODPOF

4 NM Holding Pattern

1.5 NM

1 NM

2.8 NM

9.7 NM

7000 x 130

249

220

2998 x 99

311°

VGSI and RNAV glidepath not coincident (VGSI Angle 3.00/TCH 56).

GP 3.10° TCH 59

CATEGORY	A	B	C	D
LPV DA	513-1 311 (400-1)			
LNAV/VNAV DA	679-1½ 477 (500-1½)			
LNAV MDA	720-1	518 (600-1)	720-1¼	518 (600-1¼)
<div>CIRCLING</div>	1000-1	792 (800-1)	1000-2¼ 792 (800-2¼)	1060-2¾ 852 (900-2¾)

GRENADA, MISSISSIPPI

Amdt 1C 05NOV20

GRENADA MUNI (GNTF)

33°50'N-89°48'W

**RNAV (GPS) RWY 31**