

WAAS CH <b>97328</b> <b>W13A</b>	APP CRS <b>131°</b>	Rwy Idg <b>7000</b> TDZE <b>208</b> Apt Elev <b>208</b>
--	------------------------	---

## RNAV (GPS) RWY 13

GRENADA MUNI (GNF)

RNP APCH.

**T** For uncompensated Baro-VNAV systems, procedure NA below -9°C or above 54°C. Baro-VNAV and VDP NA when using Greenwood altimeter setting. For Inop ALS, increase LNAV/VNAV all Cats and LNAV Cat C/D visibility to 1½ SM. When local altimeter setting not received, use Greenwood altimeter setting: Increase all DAs 65 feet; increase all MDAs 80 feet and visibility LNAV Cats C and D and Circling all Cats ¼ SM. For Inop ALS when using Greenwood altimeter setting, increase LPV all Cats visibility to ¾ SM and LNAV/VNAV all Cats visibility to 1½ SM. Circling Rwy 4, 22 NA at night.

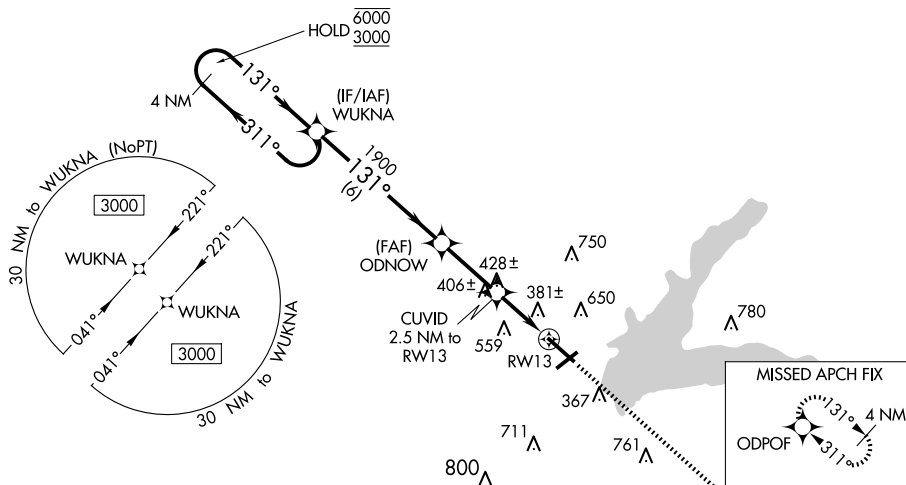
MALSR

**MISSED APPROACH:**  
Climb to 3000 direct  
ODPOF and hold.

AWOS-3PT  
118.025

MEMPHIS CENTER  
128.5 279.55

UNICOM  
122.8 (CTAF)



4 NM Holding Pattern

WUKNA

VGS and RNAV glidepath not coincident (VGS Angle 3.00/TCH 52).

3000 ODPOF

6000 311°

3000 131°

ODNOW 1900

CUVID 2.5 NM to RW13

\*1.3 NM to RW13

\*1040

GP 3.00° TCH 55

RW13

\*RNAV only

CATEGORY	A	B	C	D
LPV DA	453-1/2 245 (300-1/2)			
LNAV/ VNAV DA	666-1 1/8 458 (500-1 1/8)			
LNAV MDA	680-1/2 472 (500-1/2)		680-1 472 (500-1)	
<b>C</b> CIRCLING	1000-1 792 (800-1)		1000-2 1/4 792 (800-2 1/4)	1060-2 3/4 852 (900-2 3/4)

ELEV 208		TDZE 208
----------	--	----------

MIRL Rwy 13-31