

VOR EDN
116.6

APP CRS
065°

Rwy Idg
TDZE
Apt Elev
5080
360
361

VOR RWY 5
ENTERPRISE MUNI(EDN)

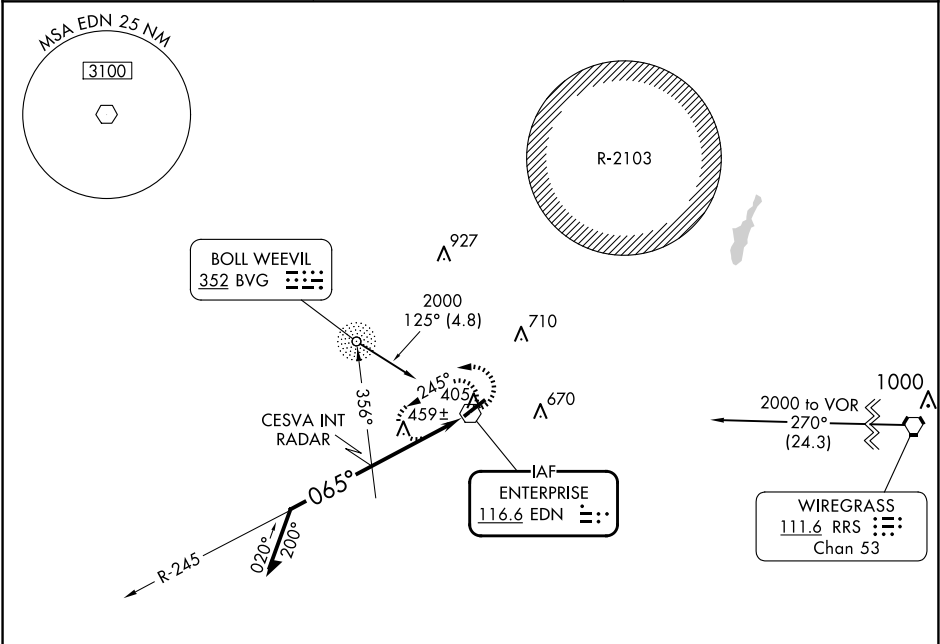
ADF or RADAR required.
Use Cairns AAF (Fort Novosel) altimeter setting.

MISSED APPROACH:
Climbing left turn to 2500
in EDN VOR holding pattern.

AWOS-3PT
118.9

CAIRNS APP CON ★
133.45 239.275

UNICOM
122.8 (CTAF)



ELEV 361

TDZE 360

2500 EDN

EDN VOR 6000

Remain within 10 NM

1800 245°

CESVA INT RADAR

065°

1540

2.85° TCH 50

4 NM

CATEGORY	A	B	C	D
S-5	1540-1¼ 1180 (1200-1¼)	1540-1½ 1180 (1200-1½)	1540-3 1180 (1200-3)	NA
CIRCLING	1540-1¼ 1179 (1200-1¼)	1540-1½ 1179 (1200-1½)	1540-3 1179 (1200-3)	NA
CESVA INT/RADAR MINIMUMS				
S-5	820-1	460 (500-1)	820-1¼ 460 (500-1¼)	NA
CIRCLING	920-1	559 (600-1)	1100-2 739 (800-2)	NA

5080 X 100

065°

REIL Rwys 5 and 23

MIRL Rwy 5-23