

WAAS CH 72614 W05A	APP CRS 055°	Rwy Idg 5080 TDZE 360 Apt Elev 361
--	------------------------	---

RNAV (GPS) RWY 5

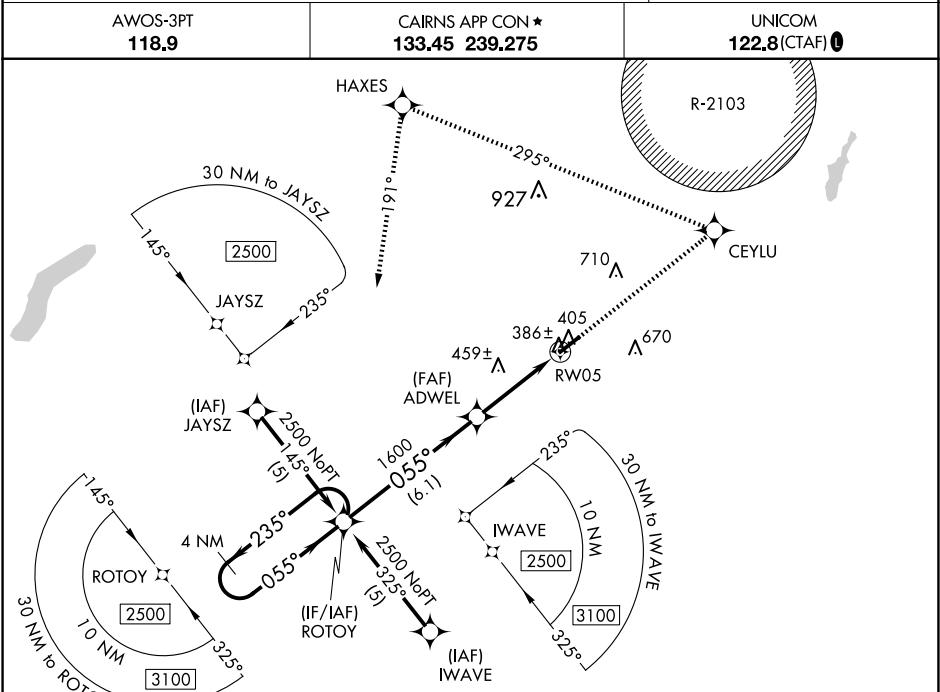
ENTERPRISE MUNI (EDN)

T

A

Baro-VNAV NA. For uncompensated Baro-VNAV systems, LNAV/VNAV NA below -15°C (5°F) or above 54°C (130°F). DME/DME RNP-0.3 NA. Use Cairns AAF (Fort Novosel) altimeter setting.

MISSED APPROACH: Climb to 2500 direct CEYLU and left turn via track 295° to HAXES and left turn via track 191° to ROTOY and hold.



ELEV 361

TDZE 360

4 NM Holding Pattern ROTOY

2500 CEYLU tr 295° HAXES tr 191° ROTOY

2500 ← 235° 055° → 055° 1600 RW05

GP 3.00° TCH 40

VGSI and RNAV glidepath not coincident (VGSI Angle 3.00/TCH 50).

6.1 NM 3.8 NM

CATEGORY	A	B	C	D
LPV DA	642-1 282 (300-1)			NA
LNAV/VNAV DA	688-1¼ 328 (400-1¼)			NA
LNAV MDA	760-1 400 (400-1)			NA
CIRCLING	920-1 559 (600-1)		1100-2 739 (800-2)	NA

REIL Rwys 5 and 23

MIRL Rwy 5-23