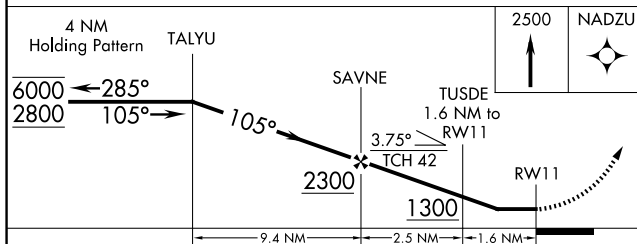
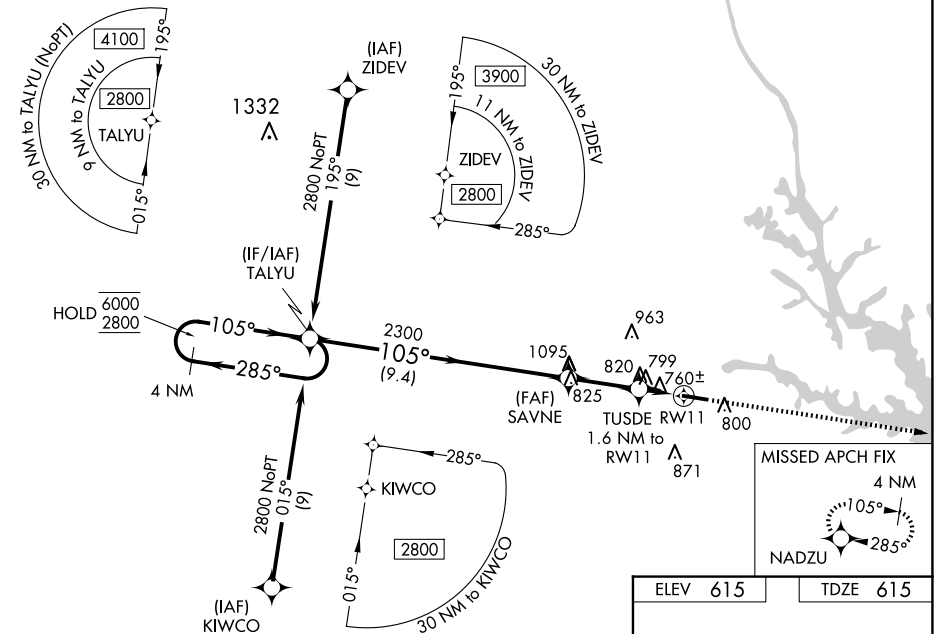


23278

RNAV (GPS) RWY 11
ELBERT COUNTY-PATZ FLD (EBA)

T Procedure NA at night. Rwy 11 helicopter
A visibility reduction below 1 SM NA.

MISSED APPROACH: Climb to 2500
direct NADZU and hold.

UNICOM
122.8 (CTAF) **L**

CATEGORY	A	B	C	D
LP MDA	1060-1	445 (500-1)	1060-1 $\frac{3}{8}$ 445 (500-1 $\frac{3}{8}$)	NA
LNAV MDA	1120-1	505 (600-1)	1120-1 $\frac{3}{8}$ 505 (600-1 $\frac{3}{8}$)	NA
C CIRCLING	1160-1	545 (600-1)	1280-1 $\frac{3}{4}$ 665 (700-1 $\frac{3}{4}$)	NA

MIRL Rwy 11-29 **L**

ELBERT COUNTY-PATZ FLD (EBA)
RNAV (GPS) RWY 11