

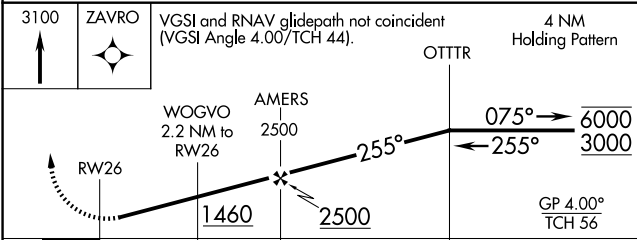
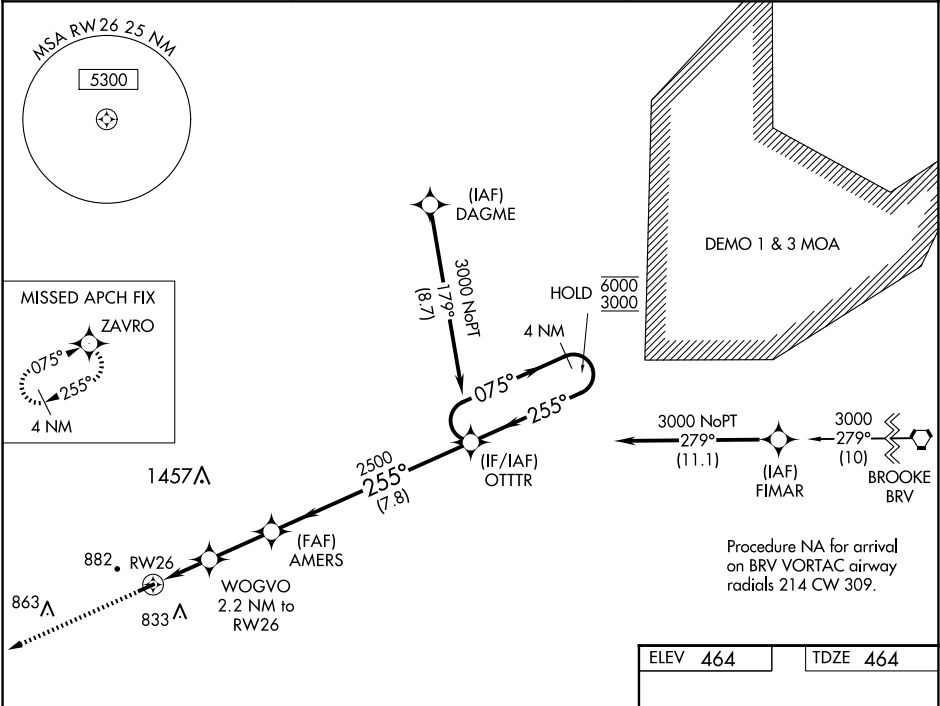
WAAS CH <b>56447</b> <b>W26A</b>	APP CRS <b>255°</b>	Rwy Ldg TDZE <b>464</b> Apt Elev <b>464</b>
--	------------------------	---

RNAV (GPS) RWY 26

ORANGE COUNTY (OMH)

RNP APCH - GPS.	Procedure NA at night. Rwy 26 helicopter visibility reduction below 1SM NA. For uncompensated Baro-VNAV systems, LNAV/VNAV NA below -15°C or above 54°C.	MISSED APPROACH: Climb to 3100 direct ZAVRO and hold.
-----------------	---	--

AWOS-3 <b>118.075</b>	POTOMAC APP CON <b>132.85 323.125</b>	UNICOM <b>122.8 (CTAF) 0</b>
--------------------------	--	---------------------------------



CATEGORY	A	B	C	D
LPV DA	808-1	344 (400-1)	NA	
LNAV/VNAV DA	914-1 $\frac{3}{8}$	450 (500-1 $\frac{3}{8}$ )	NA	
LNAV MDA	1000-1	536 (600-1)	NA	
CIRCLING	1320-1 $\frac{1}{4}$	856 (900-1 $\frac{1}{4}$ )	NA	

