

APP CRS  
320°

Rwy Idg  
3299

TDZE  
297

Apt Elev  
297

RNAV (GPS) RWY 32

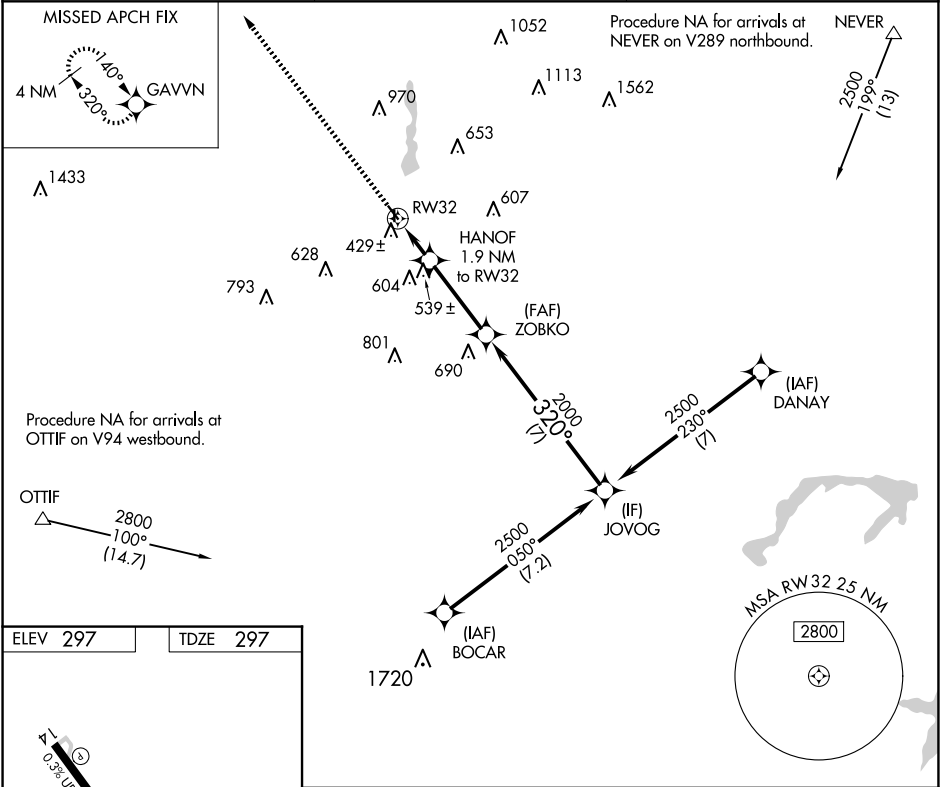
GLADEWATER MUNI (Ø7F)

NA

Rwy 32 helicopter visibility reduction below 1 SM NA. DME/DME RNP-0.3 NA. Procedure NA at night. Use Gilmer altimeter setting, when not received use Longview altimeter setting and increase all MDA 20 feet and increase LNAV Cat C visibility 1/8 SM.

MISSED APPROACH: Climb to 2500 direct GAVVN and hold.

JXI AWOS-3PT 120.25	LONGVIEW APP CON ★ 124.275 257.975	CTAF 122.9
------------------------	---------------------------------------	---------------



2500	GAVVN			
		HANOF 1.9 NM to RW32	ZOBKO	JOVOG
		3.00° TCH 40		
		940	2000	2500
		1.9 NM	3.3 NM	7 NM
CATEGORY	A	B	C	D
LNAV MDA	720-1	423 (500-1)	720-1¼ 423 (500-1¼)	NA
CIRCLING	880-1 583 (600-1)	1000-1 703 (800-1)	1000-2 703 (800-2)	NA