

APP CRS
140°

Rwy Idg
TDZE
Apt Elev

3299
297
297

RNAV (GPS) RWY 14
GLADEWATER MUNI (Ø7F')

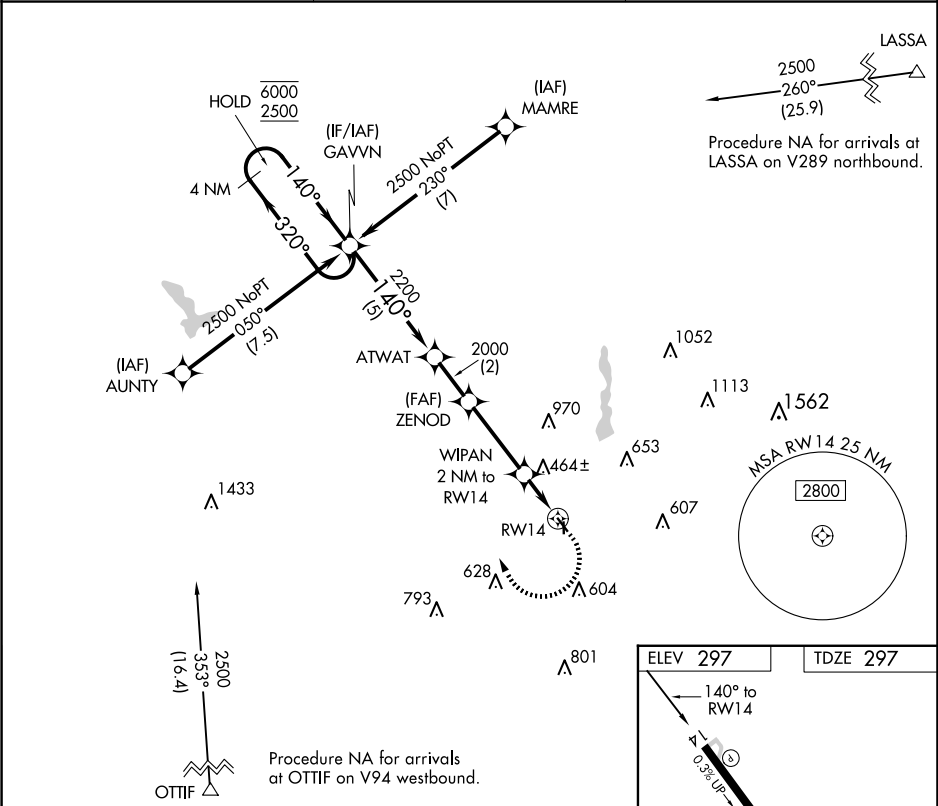
RNP APCH

▼
NA

Procedure NA at night. Rwy 14 helicopter visibility reduction below 1 SM NA. Use Gilmer altimeter setting, when not received use Longview altimeter setting and increase all MDA 20 feet and increase LNAV Cat C visibility ½ SM.

MISSED APPROACH:
Climbing right turn to 2500 direct GAVVN and hold.

JXI AWOS-3PT 120.25	LONGVIEW APP CON ★ 124.275 257.975	CTAF 122.9
------------------------	---------------------------------------	---------------



4 NM Holding Pattern

GAVVN

Visual Segment - Obstacles.

2500

GAVVN

6000
2500

320°

140°

140°

ATWAT

ZENOD

2200

2000

960

WIPAN 2 NM to RW14

RW14

CATEGORY

A

B

C

D

LNAV MDA

800-1

503 (600-1)

800-1 3/8

503 (600-1 3/8)

NA

CIRCLING

880-1

1000-1

1000-2

NA

583 (600-1)

703 (800-1)

703 (800-2)

MRL Rwy 14-32