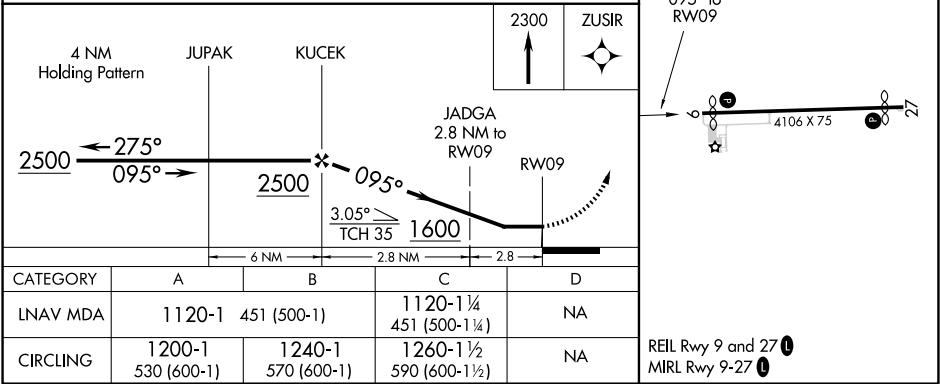
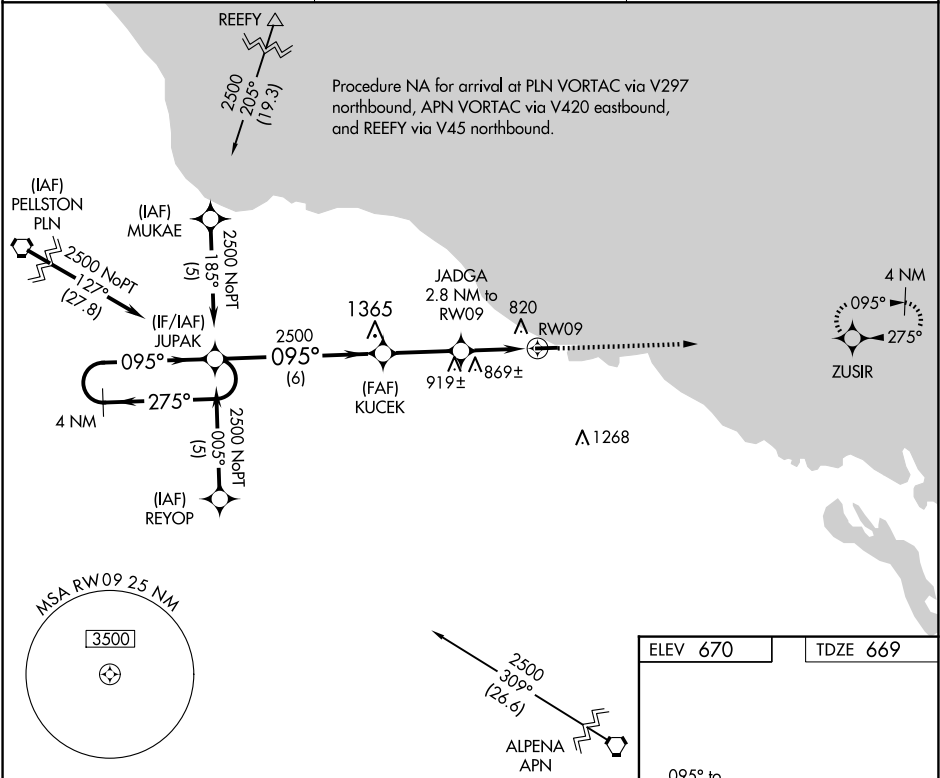


| | | |
|---------|----------|------|
| APP CRS | Rwy Idg | 3886 |
| 095° | TDZE | 669 |
| | Apt Elev | 670 |

RNAV (GPS) RWY 9
PRESQUE ISLE COUNTY (PZQ)

| | | |
|---|-----------------------------------|---|
| RNP APCH. | | MISSED APPROACH: Climb to 2300 direct ZUSIR and hold. |
| If local altimeter setting not received, use Alpena County Rgnl altimeter setting and increase all MDAs 60 feet. Straight-in/Circling Rwy 9 NA at night. Rwy 9 helicopter visibility reduction below 1 SM NA. | | |
| AWOS-3 118.125 | ALPENA APP CON ★ 128.425 379.3 | CTAF 122.9 0 |



EC-1, 07 AUG 2025 to 04 SEP 2025

EC-1, 07 AUG 2025 to 04 SEP 2025