

APP CRS
275°

Rwy Idg
TDZE
Apt Elev

3277
670
670

RNAV (GPS) RWY 27

PRESQUE ISLE COUNTY (PZQ)

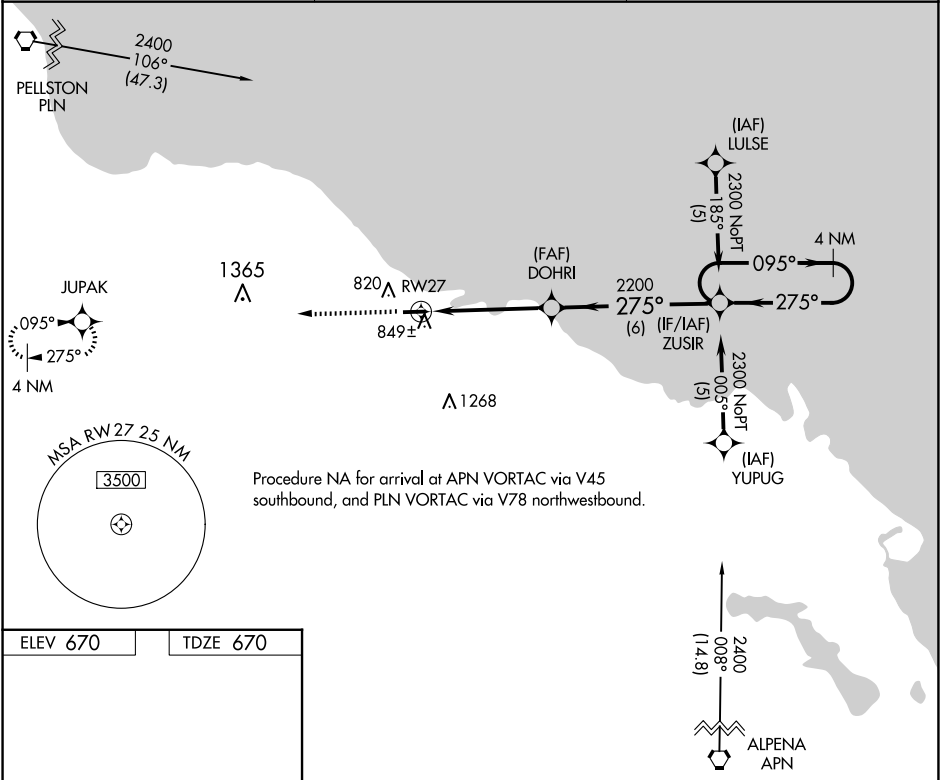
▼

▲ NA

DME/DME RNP-0.3 NA. Circling NA at night to Rwy 9.
If local altimeter setting not received, use Alpena County
Rgnl altimeter setting and increase all MDAs 60 feet.
VDP NA with Alpena County Rgnl altimeter setting.

MISSED APPROACH: Climb to
2500 direct JUPAK and hold.

AWOS-3 118.125	ALPENA APP CON ★ 128.425 379.3	CTAF 122.9 ❶
-------------------	-----------------------------------	-----------------



ELEV 670

TDZE 670

275° to RW27

4106 X 75

27

2500

JUPAK

1.2 NM to RW27

DOHRI

2200

3.04°

TCH 34

6 NM

ZUSIR

2300

CATEGORY	A	B	C	D
LNAV MDA	1100-1	430 (500-1)	1100-1¼ 430 (500-1¼)	NA
CIRCLING	1200-1 530 (600-1)	1240-1 570 (600-1)	1260-1½ 590 (600-1½)	NA

REIL Rwy 9 and 27 ❶

MIRL Rwy 9-27 ❶

EC-1, 07 AUG 2025 to 04 SEP 2025

EC-1, 07 AUG 2025 to 04 SEP 2025