


25107

RNAV (GPS) RWY 35
MORITZ MEML (K61)

	Circling Rwy 17 NA at night. Rwy 35 helicopter visibility reduction below $\frac{3}{4}$ SM NA. VDP NA when using Concordia altimeter setting. When local altimeter setting not received, use Concordia altimeter setting and increase all MDAs 80 feet. Circling Rwy 4, 8, 22, 26 NA.
---	---

MISSED APPROACH: Climb to 4000
direct CADAD and hold.

AWOS-3PT 118.225	KANSAS CITY CENTER 134.9 363.2	UNICOM 122.8 (CTAF) 0
----------------------------	--	---------------------------------

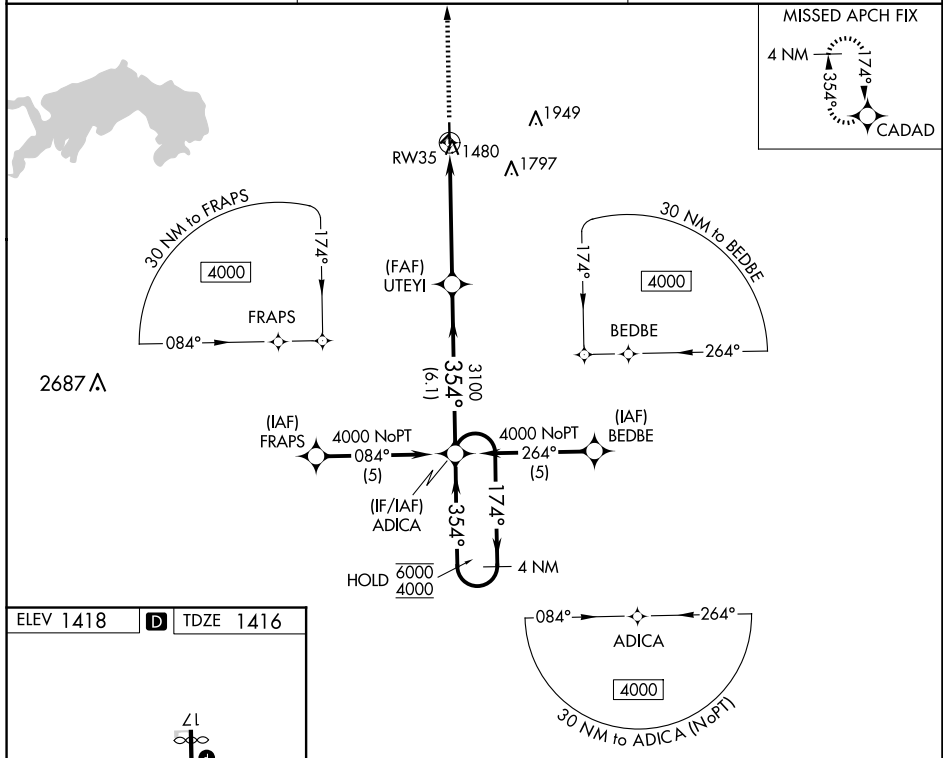
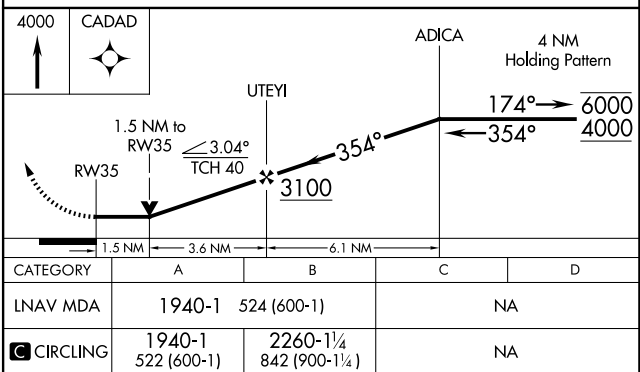


Diagram illustrating the layout of Runway 17-35 and Taxiway A. The runway is 4200 x 75 feet. Taxiway A is 2340 x 120 feet. The angle between the runway and taxiway is 354°. A star symbol is located near the intersection.



MORITZ MEML (K61)
RNAV (GPS) RWY 35

NC-2, 07 AUG 2025 to 04 SEP 2025