

WAVERLY, IOWA

AL-6558 (FAA)

22223

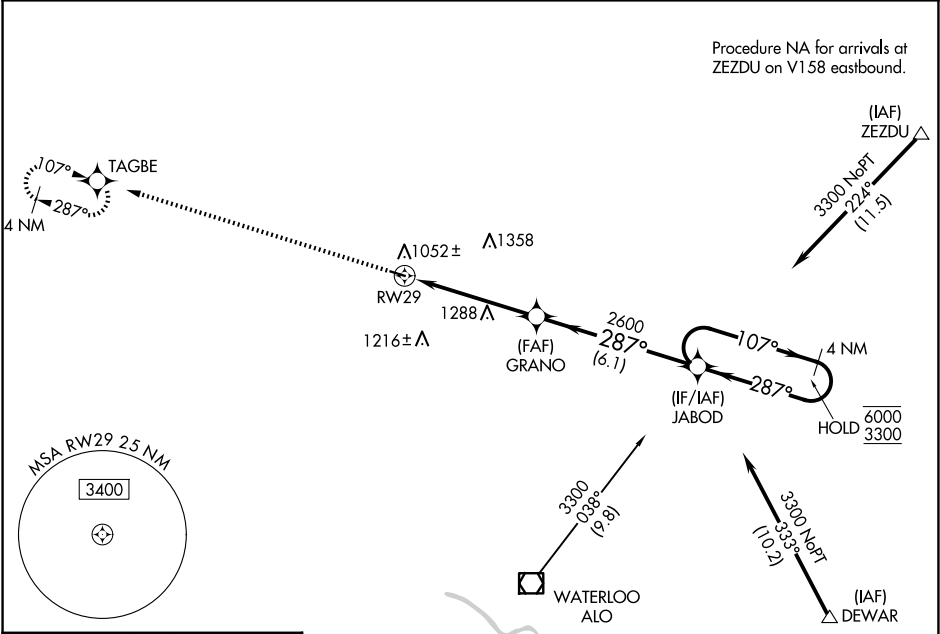
WAAS CH 78343 W29A	APP CRS 287°	Rwy Idg TDZE Apt Elev	3200 992 992
--	------------------------	-----------------------------	---

RNAV (GPS) RWY 29

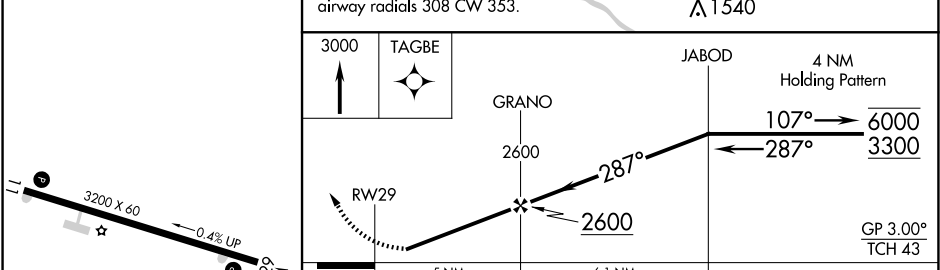
WAVERLY MUNI (C25)

RNP APCH - GPS.	MISSED APPROACH: Climb to 3000 direct TAGBE and hold.
<div><div>▼</div><div>NA</div></div> Circling to Rwy 11 NA at night. Rwy 29 helicopter visibility reduction below ¾ SM NA. Baro-VNAV NA. Use Waterloo altimeter setting.	

ALO ASOS 120.65	WATERLOO APP CON ★ 118.9 251.15	UNICOM 122.8 (CTAF) 0
---------------------------	---	---------------------------------



ELEV 992	TDZE 992
----------	----------



CATEGORY	A	B	C	D
LPV DA	1287-1	295 (300-1)		NA
LNAV/VNAV DA	1334-1	342 (400-1)		NA
LNAV MDA	1600-1	608 (700-1)	1600-1¾ 608 (700-1¾)	NA
CIRCLING	1600-1 608 (700-1)	1620-1 628 (700-1)	1620-1¾ 628 (700-1¾)	NA

WAVERLY, IOWA
Orig-A 11AUG22

42°45'N-92°30'W

WAVERLY MUNI (C25)

RNAV (GPS) RWY 29

NC-3, 07 AUG 2025 to 04 SEP 2025

NC-3, 07 AUG 2025 to 04 SEP 2025