

VOR/DME AXN	APP CRS	Rwy Idg
115.95	003°	4500
Chan 106(Y)		TDZE 1384
		Apt Elev 1394

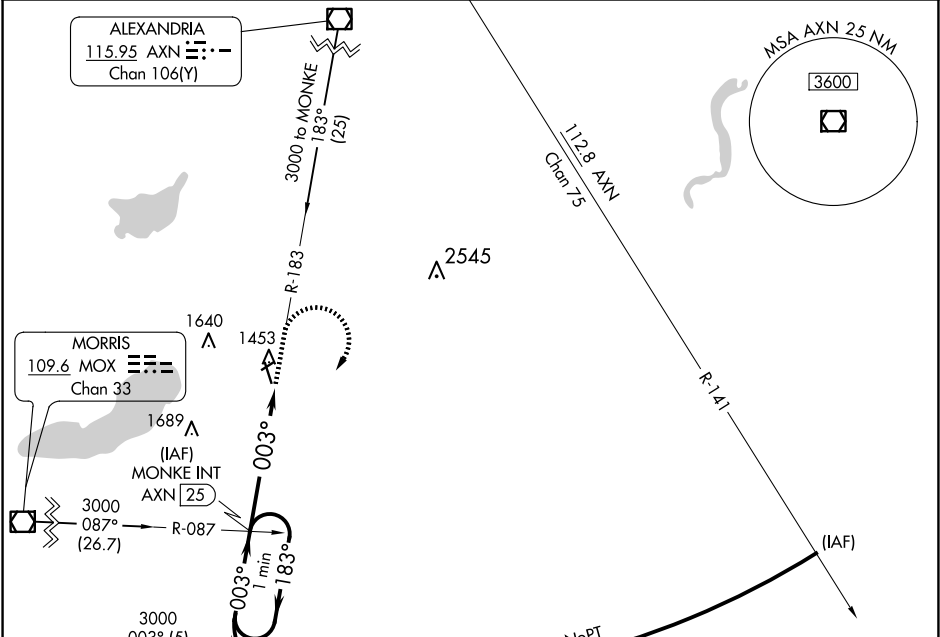
VOR RWY 33

GLENWOOD MUNI (GHW)

▼ Circling to Rwy 5/23 NA. When local altimeter setting not received, use Alexandria altimeter setting and increase all MDA 40 feet and S-33 Cat C visibility ¼ mile. Rwy 33 helicopter visibility reduction below ¾ SM NA.

MISSED APPROACH: Climb to 2000, then climbing right turn to 3000 via AXN R-183 to MONKE INT/25 DME and hold.

AWOS-3 118.925	MINNEAPOLIS CENTER 126.1 269.2	GCO 121.725	CTAF 122.90
--------------------------	--	-----------------------	-----------------------



ELEV 1394	TDZE 1384
-----------	-----------

One Minute Holding Pattern

MONKE INT AXN [25]

3000 ← 183°

003° →

5.4 NM

2000

3000

AXN R-183

MONKE INT

003° 5.4 NM from FAF

AFB 0 X 7.5

2778 X 196

33

MIRL Rwy 15-33

FAF to MAP 5.4 NM

CATEGORY	A	B	C	D
S-33	1880-1	496 (500-1)	1880-1¼ 496 (500-1¼)	NA
CIRCLING	1880-1	486 (500-1)	1940-1½ 546 (600-1½)	NA

Knots	60	90	120	150	180
Min:Sec	5:24	3:36	2:42	2:10	1:48