

GLENWOOD, MINNESOTA

AL-6556 (FAA)

21140

WAAS CH 70333 W15A	APP CRS 158°	Rwy Idg 4500 TDZE 1391 Apt Elev 1394
--	------------------------	---

RNAV (GPS) RWY 15

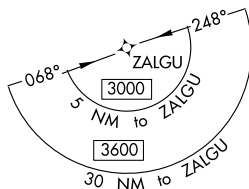
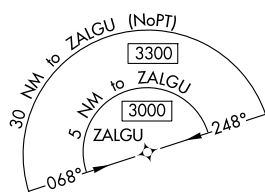
GLENWOOD MUNI (GHW)

T For uncompensated Baro-VNAV systems, LNAV/VNAV NA below -17°C (-2°F) or above 54°C (130°F). DME/DME RNP-0.3 NA. Helicopter visibility reduction below 1 SM NA.

A When local altimeter setting not received, use Alexandria altimeter setting and increase DA 36 feet and all MDA 40 feet. Baro-VNAV and VDP NA when using Alexandria altimeter setting. Circling NA to Rwys 5/23.

MISSED APPROACH:
Climb to 3000 direct
ITVOY and hold.

AWOS-3 118.925	MINNEAPOLIS CENTER 126.1 269.2	GCO 121.725	CTAF 122.9 0
--------------------------	--	-----------------------	------------------------

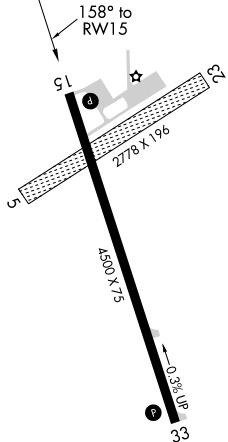


2545

MISSED APCH FIX



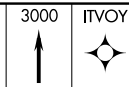
ELEV 1394		TDZE 1391
-----------	--	-----------



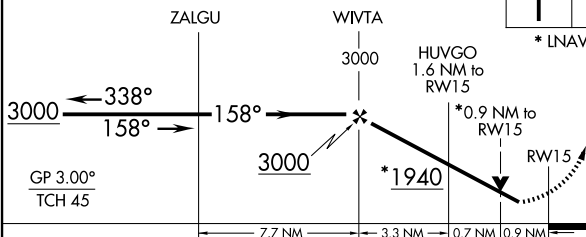
MIRL Rwy 15-33 (L)

4 NM
Holding Pattern

VGSI and RNAV glidepath not coincident (VGSI Angle 3.00/TCH 33).



* LNAV only



CATEGORY	A	B	C	D
LPV DA	1641-1	250 (300-1)		NA
LNAV/ VNAV DA	1641-1	250 (300-1)		NA
LNAV MDA	1720-1	329 (400-1)		NA
CIRCLING	1840-1 446 (500-1)	1860-1 466 (500-1)	1940-1½ 546 (600-1½)	NA

GLENWOOD, MINNESOTA

Orig-C 20MAY21

45°39'N-95°19'W

GLENWOOD MUNI (GHW)

RNAV (GPS) RWY 15

NC-1, 07 AUG 2025 to 04 SEP 2025