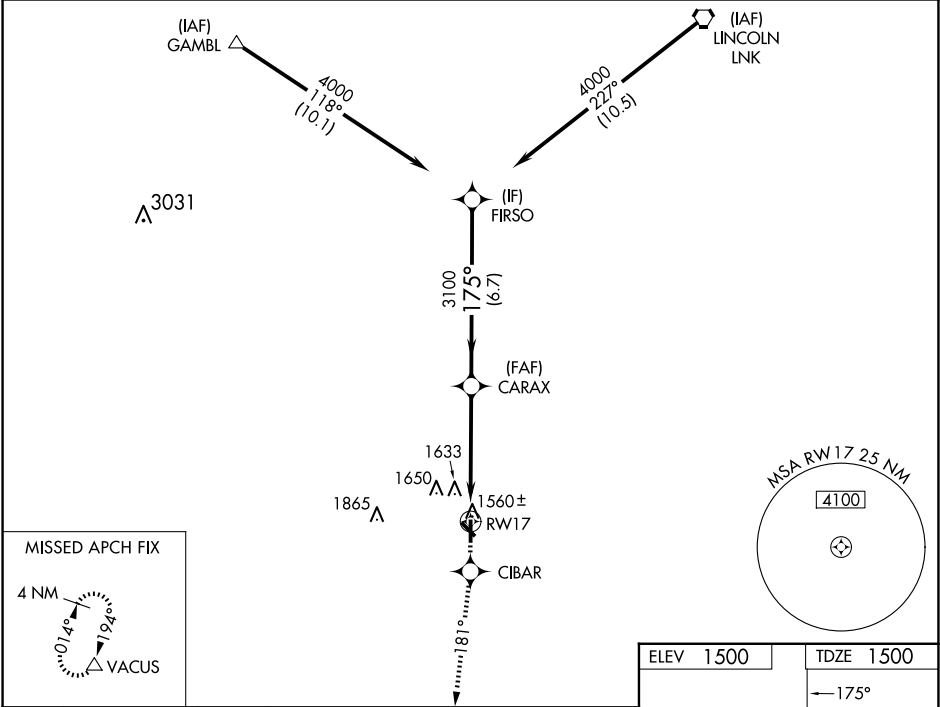


WAAS CH 63107 W17A	APP CRS 175°	Rwy Ldg TDZE Apt Elev	4201 1500 1500
--	------------------------	-----------------------------	---

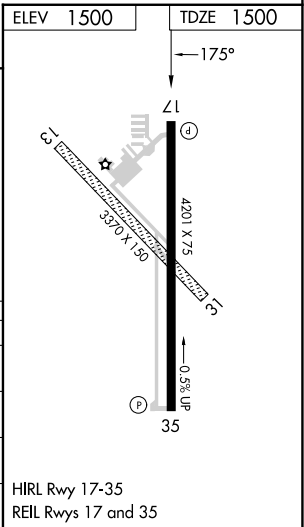
RNAV (GPS) RWY 17
CRETE MUNI (CEK)

<div><div>Baro-VNAV NA. DME/DME RNP-0.3 NA. Visibility reduction by helicopters NA. Use Lincoln altimeter setting; when not received, use Beatrice altimeter setting.</div><div>NA</div></div>	MISSED APPROACH: Climb to 4000 direct CIBAR and via 181° track to VACUS and hold, continue climb-in-hold to 4000.
--	---

OMAHA APP CON 124.0 270.3	UNICOM 122.8 (CTAF)
-------------------------------------	-------------------------------



4000	CIBAR	VACUS	VGSI and RNAV glidepath not coincident (VGSI Angle 3.00/TCH 40).	
↑	✧	tr 181°	FIRSO	
<div><div><div>RWY 17</div><div>CARAX</div><div>FIRSO</div></div><div>4000</div><div>3100</div><div>175°</div><div>4.8 NM</div><div>6.7 NM</div><div>Procedure Turn NA</div><div>GP 3.00°</div><div>TCH 40</div></div>				
CATEGORY	A	B	C	D
LPV DA	1875-1¼	375 (400-1¼)		NA
LNAV/VNAV DA	2051-2	551 (600-2)		NA
LNAV MDA	2080-1	580 (600-1)		NA
CIRCLING	2140-1	640 (700-1)		NA



NC-2, 07 AUG 2025 to 04 SEP 2025

NC-2, 07 AUG 2025 to 04 SEP 2025