

TACAN Z RWY 13

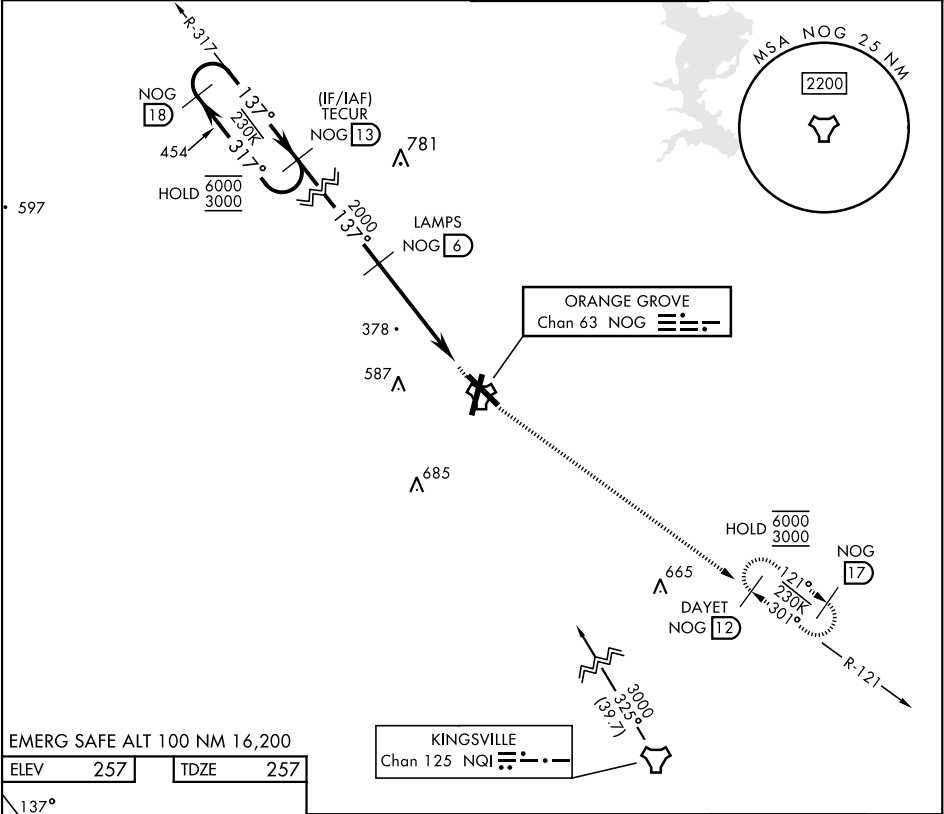
TACAN Chan	NOG 63	APCH CRS 137°	Rwy Idg 8001 TDZE 257 Arpt Elev 257
---------------	-----------	------------------	--

[USN]

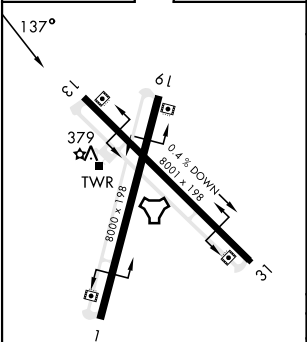
ORANGE GROVE NALF (KNOG)

MISSED APPROACH: Climb to 700 then climbing left turn to 3000 and intercept NOG TACAN R-121 to DAYET and hold.

ATIS ★ 254.35	KINGSVILLE APP CON 119.90 290.45	TOWER ★ 128.4 281.425	GND CON 229.4
------------------	-------------------------------------	--------------------------	------------------



EMERG SAFE ALT 100 NM 16,200			
ELEV	257		TDZE 257



The diagram illustrates a flight path starting from a point with vertical coordinates 6000 and 3000. The path is defined by several navigation points (NOG) and bearings:

- NOG 18** and **TECUR NOG 13** are at the start. The bearing between them is  $317^\circ$  (leftward) and  $137^\circ$  (rightward).
- The path continues from **TECUR NOG 13** with a bearing of  $137^\circ$  to **LAMPS NOG 6**.
- LAMPS NOG 6** is at a vertical coordinate of 2000. The bearing from **TECUR NOG 13** to **LAMPS NOG 6** is  $3.04^\circ$  with a **TCH 50** (touchdown height) of 4.8 NM.
- From **LAMPS NOG 6**, the path goes to **NOG 1.8** and **SPARS NOG 1.2**.
- The path then continues to **NOG TACAN**.
- A distance of 0.5 is indicated between **SPARS NOG 1.2** and **NOG TACAN**.

At the top right, there are three directional indicators:

- A straight arrow pointing up, labeled 700.
- A curved arrow pointing up and to the right, labeled NOG R-121 and 3000.
- A box labeled DAYET NOG 12.

CATEGORY	A		B		C		D	
S-13	640-1	383	(400-1)		640-1½	383	(400-1½)	
<b>C</b> CIRCLING	720-1	463	(500-1)		920-1¾ 663 (700-1¾)		1000-2½ 743 (800-2½)	

TACAN Z RWY 13

SC-3, 07 AUG 2025 to 04 SEP 2025

SC-3, 07 AUG 2025 to 04 SEP 2025