

ILS Z or LOC Z RWY 13

LOC/DME I-NOG 110.5 Chan 42	APCH CRS 130°	Rwy Idg TDZE 257 Arprt Elev 257
8001		

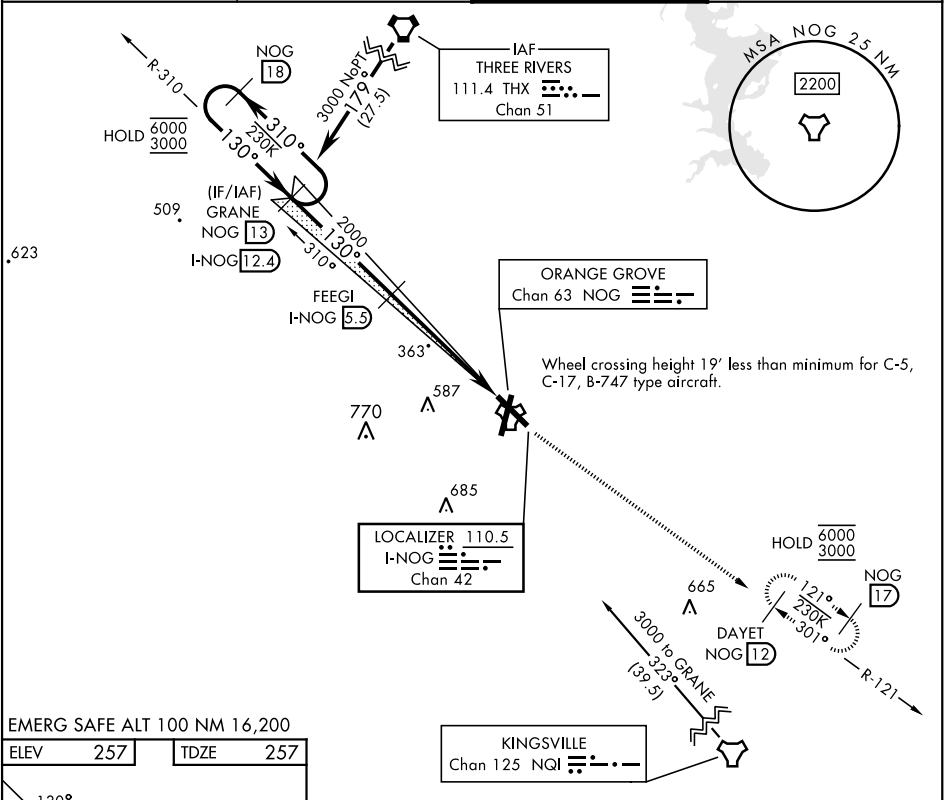
[USN]

ORANGE GROVE NALF (KNOG)

TACAN, DME required.

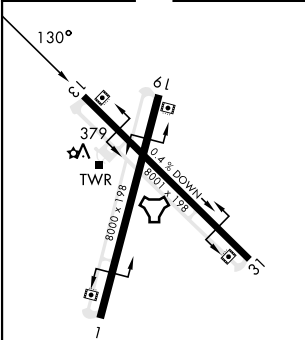
MISSED APPROACH: Climb to 700, then climb to 3000 intercept NOG TACAN R-121 to DAYET and hold.

ATIS ★ 254.35	KINGSVILLE APP CON 119.90 290.45	TOWER ★ 128.4 281.425	GND CON 229.4
-------------------------	--	---------------------------------	-------------------------



EMERG SAFE ALT 100 NM 16,200

ELEV 257	TDZE 257
----------	----------



MIRL all rwys

GRANE I-NOG 12.4 NOG 13				FEEGI I-NOG 5.5				700 3000 DAYET NOG 12			
NOG 18				I-NOG 1.2				LAPAZ I-NOG 0.6			
6000 3000				4.9 NM				0.5 NM			
CATEGORY				A				B			
S-ILS 13				457-1				200 (200-1)			
S-LOC 13				620-1				363 (400-1)			
CIRCLING				720-1 463 (500-1)				920-1 ³⁴ 663 (700-1 ³⁴)			
								1000-2 ¹² 743 (800-2 ¹²)			

ILS Z or LOC Z RWY 13

SC-3, 07 AUG 2025 to 04 SEP 2025

SC-3, 07 AUG 2025 to 04 SEP 2025