

LOC/DME I-NOG	APCH CRS	Rwy Idg
110.5	130°	8001
Chan 42		TDZE 257
		Arprt Elev 257

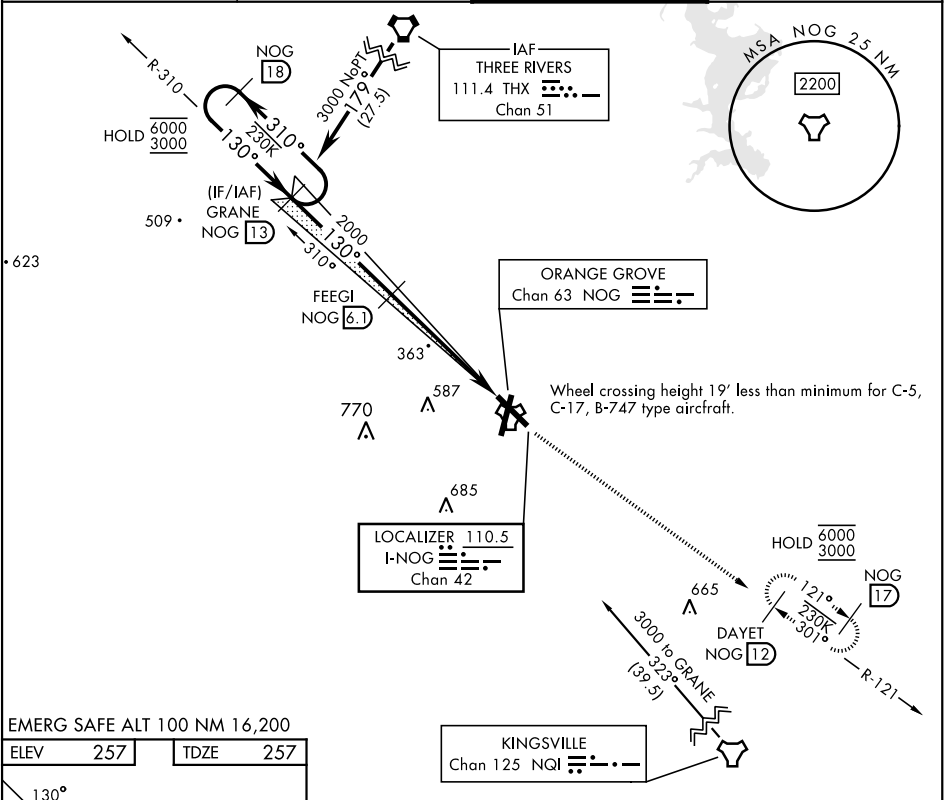
[USN]

ILS X or LOC X RWY 13

ORANGE GROVE NALF (KNOG)

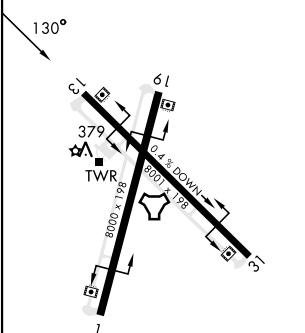
TACAN required	MISSED APPROACH: Climb to 700 then climb to 3000 intercept NOG TACAN R-121 to DAYET and hold.
----------------	---

ATIS ★ 254.35	KINGSVILLE APP CON 119.90 290.45	TOWER ★ 128.4 281.425	GND CON 229.4
------------------	-------------------------------------	--------------------------	------------------

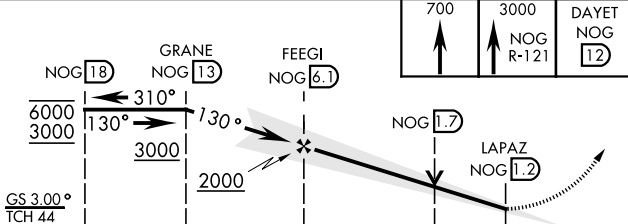


EMERG SAFE ALT 100 NM 16,200

ELEV 257	TDZE 257
----------	----------



MIRL all rwys

 <p>The diagram shows a flight path starting from the bottom left, passing through several navigation points (NOG), and ending at the top right. The path is divided into segments by vertical dashed lines representing navigation points. The segments are labeled with distances: 4.9 NM and 0.5 NM. The path is also labeled with various navigation points and their associated data: NOG 18, GRANE NOG 13, FEEGI NOG 6.1, NOG 1.7, LAPAZ NOG 1.2, and DAYET NOG 12. The path is also labeled with various distances: 6000, 3000, 310°, 130°, 130°, 3000, 2000, 700, 3000, and 12. The path is also labeled with various distances: 6000, 3000, 310°, 130°, 130°, 3000, 2000, 700, 3000, and 12. The path is also labeled with various distances: 6000, 3000, 310°, 130°, 130°, 3000, 2000, 700, 3000, and 12.</p>				
CATEGORY	A	B	C	D
S-ILS 13		457-1	200	(200-1)
S-LOC 13		620-1	363	(400-1)
CIRCLING	720-1	463 (500-1)	920-1¾ 663 (700-1¾)	1000-2½ 743 (800-2½)

ILS X or LOC X RWY 13