

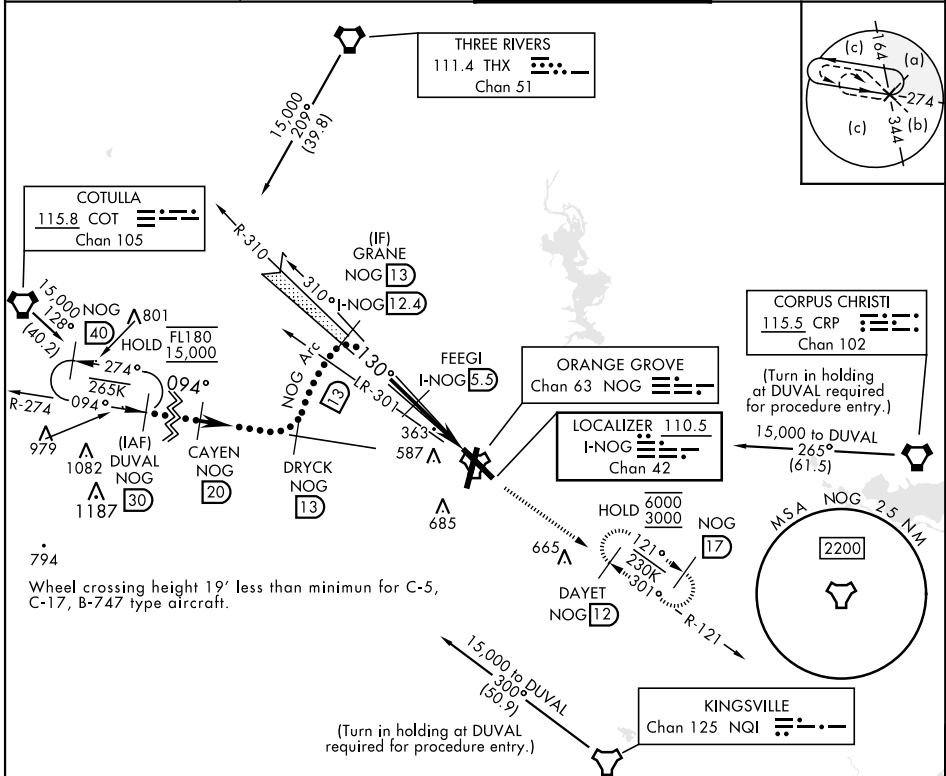
HI-ILS Y or LOC Y RWY 13

LOC/DME I-NOG <b>110.5</b> Chan <b>42</b>	APCH CRS <b>130°</b>	Rwy Idg TDZE Arpt Elev <b>8001</b> <b>257</b> <b>257</b>	[USN]	ORANGE GROVE NALF (KNOG)
---	-------------------------	---	-------	--------------------------

TACAN, DME required.

MISSED APPROACH: Climb to 700 then climbing to 3000 intercept NOG TACAN R-121 to DAYET and hold.

ATIS ★ <b>254.35</b>	KINGSVILLE APP CON <b>119.90 290.45</b>	TOWER ★ <b>128.4 281.425</b>	GND CON <b>229.4</b>
-------------------------	--	---------------------------------	-------------------------



EMERG SAFE ALT 100 NM 16,200				ELEV 257	TDZE 257
DUVAL NOG 30 *15,000 * Or as assigned GS 3.00° TCH 44		CAYEN NOG 20 8000	DRYCK NOG 13 3000 Arc	GRANE NOG 13 I-NOG 12.4 3000 130° 2000	700 3000 DAYET NOG 12 FEEGI I-NOG 5.5 I-NOG 1.2 LAPAZ I-NOG 0.6 NOG TACAN 4.9 NM 0.5 NM
CATEGORY		C	D	E	
S-ILS 13		457-1	200	(200-1)	
S-LOC 13		620-1	363	(400-1)	
CIRCLING		920-1¾ 663 (700-1¾)	1000-2½ 743 (800-2½)	1000-2¾ 743 (800-2¾)	

HI-ILS Y or LOC Y RWY 13