

HI-ILS W or LOC W RWY 13

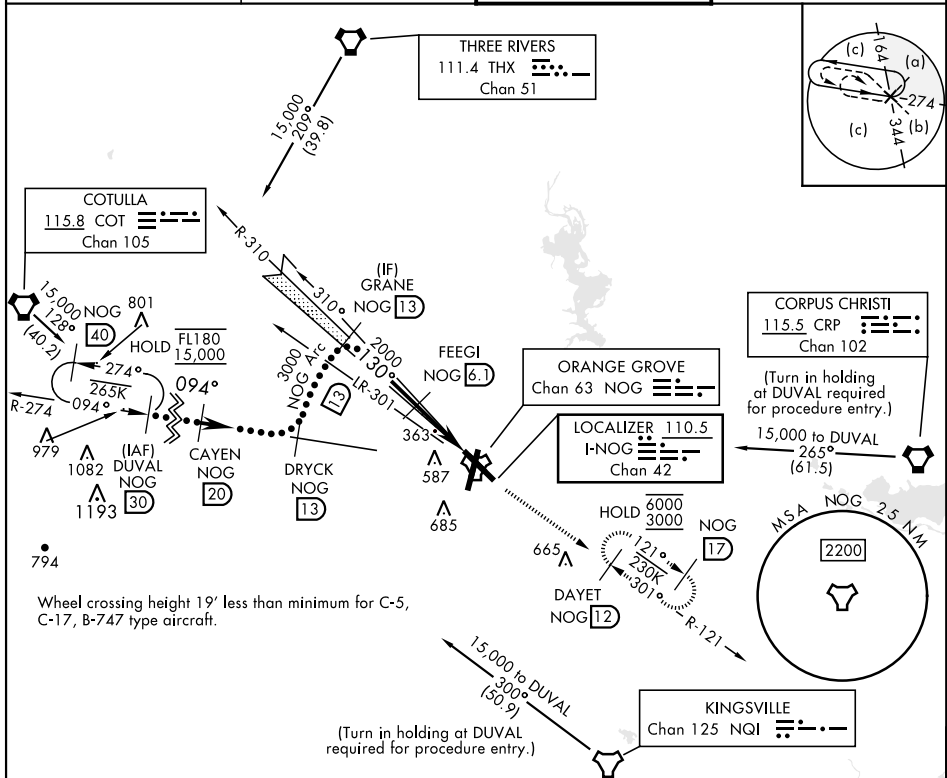
LOC/DME I-NOG 110.5 Chan 42	APCH CRS 130°	Rwy Idg TDZE Arpt Elev 8001 257 257
---	-------------------------	---

[USN]

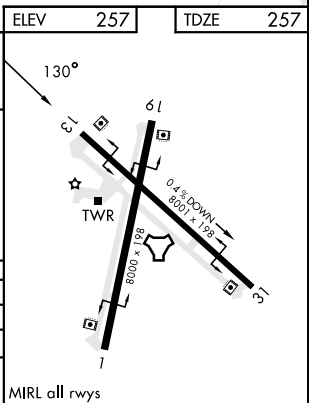
ORANGE GROVE NALF (KNOG)

TACAN required	MISSED APPROACH: Climb to 700 then climbing to 3000 intercept NOG TACAN R-121 to DAYET and hold.
----------------	--

ATIS ★ 254.35	KINGSVILLE APP CON 119.90 290.45	TOWER ★ 128.4 281.425	GND CON 229.4
-------------------------	--	---------------------------------	-------------------------



EMERG SAFE ALT 100 NM 16,200			
<div>DUVAL NOG 30, CAYEN NOG 20, DRYCK NOG 13, GRANE NOG 13, FEEGI NOG 6.1, LAPAZ NOG 12, NOG TACAN, DAYET NOG 12</div> <div>700, 3000, 130°</div> <div>*15,000, *Or as assigned, GS 3.00°, TCH 44</div> <div>8000, 3000, 2000, 4.9 NM, 0.5 NM</div>			
CATEGORY	C	D	E
S-ILS 13	457-1	200	(200-1)
S-LOC 13	620-1	363	(400-1)
CIRCLING	920-1¾ 663 (700-1¾)	1000-2½ 743 (800-2½)	1000-2¾ 743 (800-2¾)



HI-ILS W or LOC W RWY 13