

WAAS CH <b>63009</b> <b>W24A</b>	APP CRS <b>240°</b>	Rwy Idg <b>5501</b> TDZE <b>523</b> Apt Elev <b>526</b>
--	------------------------	---

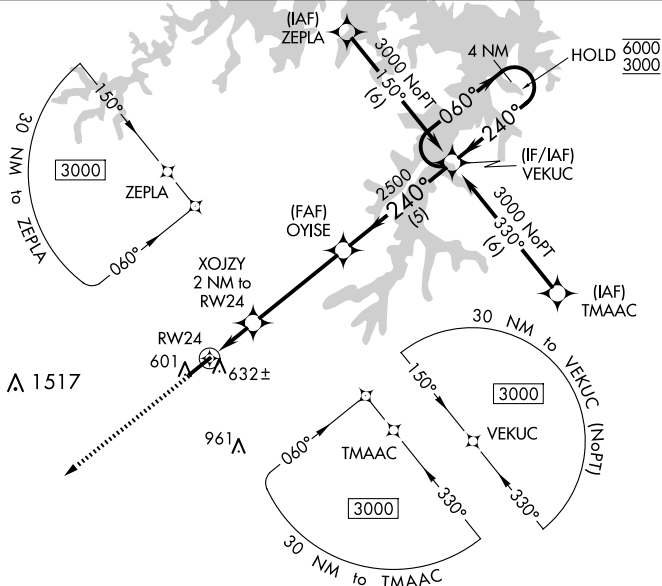
RNAV (GPS) RWY 24  
HENDERSON/OXFORD (HNZ)

RNP APCH - GPS.

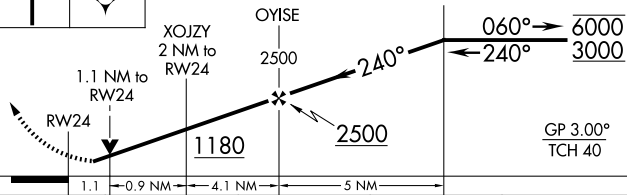
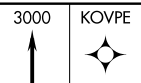
**⚠** For uncompensated Baro-VNAV systems, LNAV/VNAV NA below -16°C or above 54°C. Baro-VNAV and VDP NA when using Roxboro altimeter setting. Rwy 24 helicopter visibility reduction below ¾ SM NA. When local altimeter setting not received, use Roxboro altimeter setting and increase LPV DA to 837 feet and all visibilities ½ SM; increase LNAV/VNAV DA to 877 feet and all visibilities ½ SM; increase all MDAs 80 feet and LNAV visibility C/D ¾ SM, and Circling visibility C/D ¼ ½ SM.


**MISSED APPROACH:**  
Climb to 3000 direct  
KOVPE and hold.

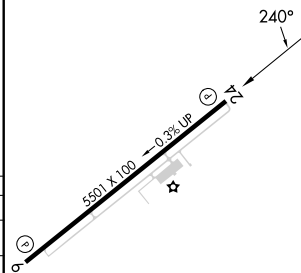
AWOS-3 <b>118.625</b>	RALEIGH APP CON <b>132.35 256.9</b>	UNICOM <b>122.8</b> (CTAF) <b>0</b>
--------------------------	--	--



ELEV	526		TDZE	523
------	-----	--	------	-----



CATEGORY		A	B	C	D
LPV	DA	773- <sup>3</sup> / <sub>4</sub>		250 (300- <sup>3</sup> / <sub>4</sub> )	
LNAV/ VNAV	DA	813- <sup>7</sup> / <sub>8</sub>		290 (300- <sup>7</sup> / <sub>8</sub> )	
LNAV	MDA	900-1		377 (400-1)	
 CIRCLING		960-1 434 (500-1)	980-1 454 (500-1)	1100-1 <sup>1</sup> / <sub>2</sub> 574 (600-1 <sup>1</sup> / <sub>2</sub> )	1280-2 <sup>1</sup> / <sub>2</sub> 754 (800-2 <sup>1</sup> / <sub>2</sub> )



REIL Rwy 6 **L**  
MIRL Rwy 6-24 **L**