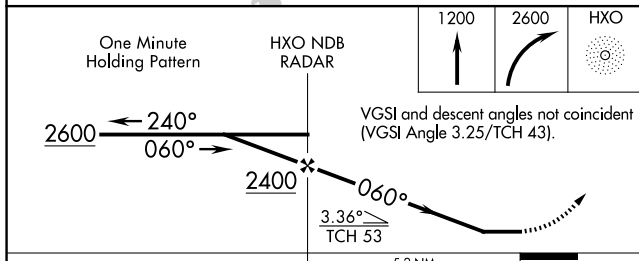
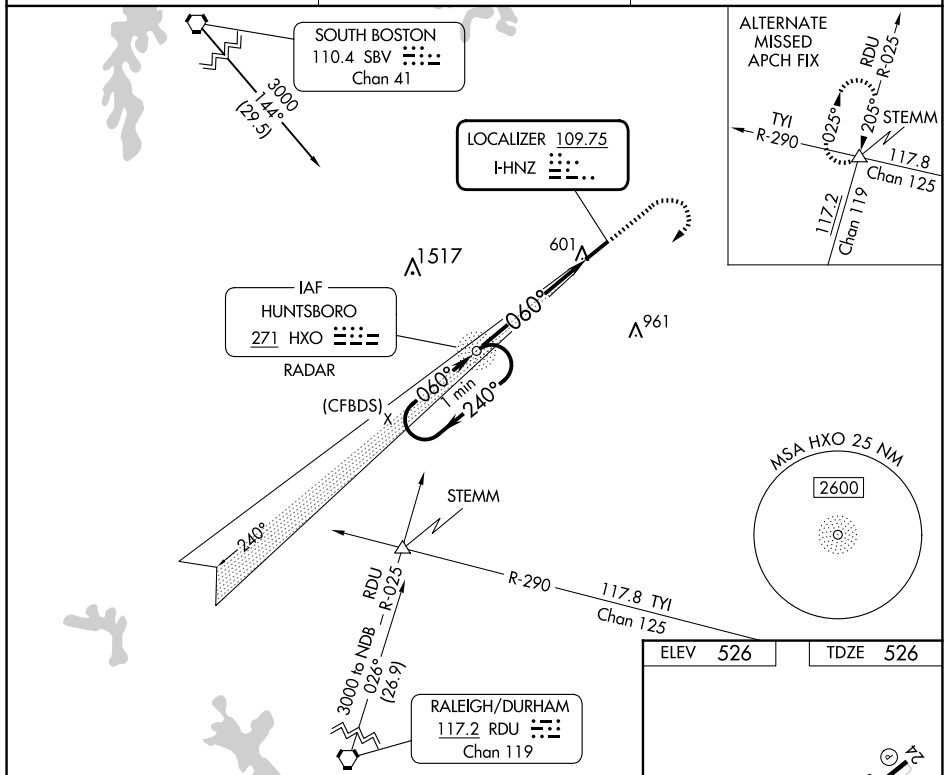


24305

LOC RWY 6  
HENDERSON/OXFORD (HNZ)

**MISSED APPROACH:** Climb to 1200 then climbing right turn to 2600 direct HXO NDB/RADAR and hold.

AWOS-3 <b>118,625</b>	RALEIGH APP CON <b>132.35 256.9</b>	UNICOM <b>122.8 (CTAF) ①</b>
--------------------------	--	---------------------------------



CATEGORY	A	B	C	D	REIL Rwy 6 MIRL Rwy 6-24					
S-6	980-1	454 (500-1)	980-1 $\frac{3}{8}$	454 (500-1 $\frac{3}{8}$ )	FAF to MAP 5.2 NM					
CIRCLING	980-1	454 (500-1)	1100-1 $\frac{1}{2}$ 574 (600-1 $\frac{1}{2}$ )	1280-2 $\frac{1}{2}$ 754 (800-2 $\frac{1}{2}$ )	Knots	60	90	120	150	180
					Min:Sec	5:12	3:28	2:36	2:05	1:44

HENDERSON/OXFORD (HNZ)  
LOC RWY 6

SE-2, 07 AUG 2025 to 04 SEP 2025