

▼

NA

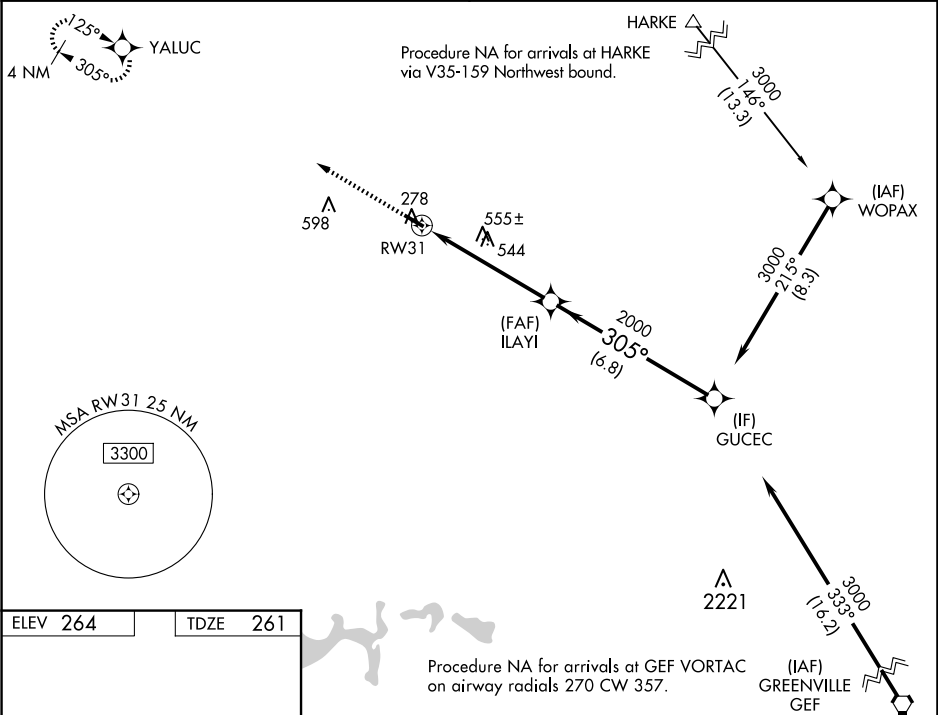
W

Baro-VNAV NA. For uncompensated Baro-VNAV systems, LNAV/VNAV NA below -15°C (5°F) or above 42°C (107°F). DME/DME RNP-0.3 NA. Visibility reduction by helicopters NA.
Use Moultrie altimeter setting, when not received, use Tallahassee Intl altimeter setting and increase LPV DA to 609, LNAV/VNAV DA to 653, and all MDA 60 feet; increase LPV and LNAV/VNAV all Cats and LNAV Cats C/D visibility 1/5 SM and increase Circling Cats C/D visibility 1/4 SM.

MISSED APPROACH:
Climb to 3000 direct YALUC and hold.

TALLAHASSEE APP CON★
128.7 254.3

UNICOM
122.7 (CTAF) 0



ELEV 264	TDZE 261	3000	YALUC	VGSI and RNAV glidepath not coincident (VGSI Angle 3.00/TCH 27).			
<div><div>13</div><div>4000 X 75</div><div>0.7% UP</div><div>305° to RW31</div><div>MIRL Rwy 13-31 0</div></div>		<div><div>ILAYI</div><div>2000</div><div>305°</div><div>3000</div><div>GP 3.00° TCH 55</div></div>		GUCEC			
		<div><div>3000</div><div>↑</div><div>RW31</div><div>5.4 NM</div><div>6.8 NM</div></div>					
CATEGORY		A		B		C	
LPV DA		565-1		304 (300-1)			
LNAV/VNAV DA		609-1½		348 (400-1½)			
LNAV MDA		900-1 639 (700-1)		900-1½ 639 (700-1½)			
CIRCLING		900-1 636 (700-1)		1020-2¼ 756 (800-2¼)		1020-2½ 756 (800-2½)	